

PRODUCT CATALOG 2026 **PEPTIDES**



Peptides® are innovations in the field of anti-aging therapy, tested by time and science.

At the intersection of fundamental science and practical medicine, we create technologies that change the perception of the body's capabilities.

Over 30 years of research in peptide bioregulation form the basis of products capable of influencing aging processes at the cellular level.

We make advanced scientific developments accessible, offering quality products and knowledge to support health and active longevity. Each preparation is the result of meticulous work by a team of scientists, confirmed by clinical studies.

Our mission is to extend active longevity and improve quality of life through modern peptide and non-peptide technologies.

We believe: age is not a verdict, but an opportunity to remain healthy, energetic, and beautiful at any age. Peptides® are your scientific partner on the path to a long and fulfilling life.

CONTENTS

PART A

SUMMARY LIST OF PEPTIDE CODES	6-A
PEPTIDES HEALTH – the concept of a natural way to maintain health	7-A
REVILAB® ML – anti-aging multifunctional peptide preparations.	8-A
REVILAB® PREPARATION – innovative products for combating aging	12-A
REVILAB® SL – peptide complexes for sublingual use	14-A
PRO PEPTIDE COMPLEXES – natural peptide complexes in solution	18-A
PRIME PEPTIDE® – a new generation of peptide preparations	22-A
CYTOGENS – peptide bioregulators based on synthesized peptides	28-A
GPL® – peptide complex geroprotectors	32-A
CYTOMAXES – peptide bioregulators based on natural peptides.	36-A
CYTOGENS LINGUAL – bioregulators based on synthesized peptides in sublingual form.	44-A
CYTOMAXES LINGUAL – bioregulators based on natural peptides in sublingual form.	48-A
MAMITON® – for the protection of women's health.	55-A
COMPREHENSIVE PREVENTION – for health, beauty, and active life	56-A
INTERNAL MESOTELS – antioxidant natural rejuvenating agents	76-A
ONCOSERIES – progressive technologies for combating the disease of the 21st century	78-A
PHYTOCOMPLEXES"AYURVEDA" – time-tested tea drinks	80-A

PART B

HAIR LINE®	86-B
RENODONT	87-B



Summary list of peptide codes

Natural peptides

Peptide code	Peptide
A-1	pancreas
A-2	thyroid gland
A-3	vessels
A-4	cartilage
A-5	brain
A-6	thymus
A-7	liver
A-8	pineal gland
A-9	kidneys
A-10	gastric mucosa
A-11	eye tissues
A-12	urinary bladder
A-13	testes
A-14	cardiac muscle
A-15	ovaries
A-16	prostate gland
A-17	adrenal glands
A-18	muscles
A-19	bronchial mucosa
A-20	bone marrow
A-21	parathyroid glands

Synthesized peptides

Peptide code	Peptide
AC-2	vessels
AC-3	liver
AC-4	cartilage
AC-5	brain
AC-6	thymus
AC-7	bronchopulmonary tree

Short peptides

Peptide code	Peptide
AA-1	pineal gland
AA-2	T-cell immune system
AA-3	B-cell immune system
AA-4	bone marrow
AA-5	brain
AA-6	retina
AA-7	vascular wall
AA-8	cardiac muscle
AA-9	cartilage
AA-10	liver
AA-11	pancreas
AA-12	testes
AA-13	urinary bladder
AA-14	bronchi
AA-15	lungs and stomach wall
AA-16	prostate
AA-17	muscles
AA-18	cerebral cortex
AA-19	thymus
AA-20	glutathione
AA-21	male reproductive system



PEPTIDES HEALTH

Concept of the **natural** path to health preservation

The level of modern medicine allows people to live quite long. At the same time, the culture of health care is becoming increasingly popular. People are paying more attention to their well-being, showing interest in current scientific achievements.

Peptides® offers products for health, youth, and beauty based on the latest scientific developments in anti-aging medicine.

WORLD-CLASS SCIENTIFIC FOUNDATION

Years of collaboration with the St. Petersburg Institute of Bioregulation and Gerontology form the basis of all Peptides® developments. Together with the Institute, we research and implement methods to slow down the aging process, creating peptide and non-peptide bioregulators that support tissue and organ processes at a physiological level.

COMPREHENSIVE APPROACH TO HEALTH

Our products affect all organs and systems of the body, providing a pronounced and lasting effect. Scientific research and clinical experience in bioregulation have laid the foundation for creating products for comprehensive impact, preventing the risk of oncological and age-related diseases.

PROVEN EFFECTIVENESS

Peptide-based products have undeniable advantages:

Targeted action. They help eliminate dysfunctions of various body systems, restoring their functions at the cellular level.

Compatibility. They perfectly combine with each other and with other medications, allowing for the creation of personalized health programs.

Safety. They do not cause side effects or withdrawal syndrome and are suitable for long-term use.

Physiological. They work within the body's own self-regulation mechanisms, gently correcting age-related changes.

QUALITY ASSURANCE

All company products have undergone necessary certification. The effectiveness and safety of each product are confirmed by numerous scientific studies and clinical application experience.

Peptides® – a scientifically grounded approach to active longevity and health preservation.

rēvilab® ML



Revilab peptide ML 07
30 capsules
0,45 g
13,5 g
Peptide complex
AA-1, AA-7, AA-12, AA-13
Biosynthetic peptides for deep recovery and renewal
Vitamin B6
L-Lysine-Hydrochloride
rēvilab ml

Revilab peptide ML 03
30 capsules
0,35 g
10,5 g
Peptide complex
AA-5, AA-8, AA-7
Biosynthetic peptides for deep recovery and renewal
Vitamin B6
L-Lysine-Hydrochloride
rēvilab ml

Revilab peptide ML 01
30 capsules
0,39 g
11,7 g
Peptide complex
AA-1, AA-3, AA-10
Biosynthetic peptides for deep recovery and renewal
Vitamin B6
L-Lysine-Hydrochloride
rēvilab ml

Revilab peptide ML 02
30 capsules
0,3 g
9,0 g
Peptide complex
AA-2, AA-3, AA-4, AA-10
Biosynthetic peptides for deep recovery and renewal
Vitamin B6
L-Lysine-Hydrochloride
rēvilab ml

Revilab peptide ML 05
30 capsules
0,3 g
9,0 g
Peptide complex
AA-2, AA-14, AA-15
Biosynthetic peptides for deep recovery and renewal
Vitamin A + E
L-Lysine-Hydrochloride
rēvilab ml

Revilab peptide ML 06
30 capsules
0,35 g
10,5 g
Peptide complex
AA-1, AA-10, AA-15
Biosynthetic peptides for deep recovery and renewal
Vitamin B6, Vitamin E
L-Lysine-Hydrochloride
rēvilab ml

rēvilab[®] ML

01—09

Anti-aging multifunctional peptide preparations



Usage recommendations for revilab ML products:

adults take 1 capsule in the morning before meals. Duration of intake is 4-6 weeks. If necessary, the intake can be repeated one or more times during the year.

30 capsules

The rēvilab[®] ML line of multifunctional preparations represents an innovative complex of modern short peptides, consisting of 2-10 amino acids. These next-generation bioregulators are developed using advanced scientific achievements in the fields of gerontology and molecular biology.

The key feature of the age protectors rēvilab[®] ML lies in the unique all-in-one principle of action—where a whole set of carefully selected peptide and non-peptide regulators is encapsulated to address a specific problem or correct a particular condition. Each of the nine products in the line contains a range of short peptides working synergistically, as well as powerful antioxidants and building materials for cells, ensuring their full recovery and functioning.

The short peptide fragments of rēvilab[®] ML are characterized by high bioavailability and provide rapid regulatory action on the restoration of the functions of internal organs and body systems. Thanks to the optimal length of the peptide chain, the active components easily penetrate cells and begin to work at the genetic level, normalizing protein synthesis and cell renewal processes.

These latest-generation bioregulators are aimed at comprehensively addressing the tasks of slowing down aging processes at the cellular and tissue levels, maintaining normal metabolic processes in the body, preventing and correcting various age-related and pathological conditions, as well as rehabilitation after severe illnesses, injuries, and surgical operations. Additionally, the products in the line enhance the body's adaptive capabilities under increased physical and psycho-emotional stress.

The rēvilab[®] ML line represents a modern approach to maintaining health and active longevity, combining the achievements of peptide bioregulation and the principles of personalized preventive medicine.

REVILAB	PURPOSE	APPLICATION AREA	ACTIVE COMPONENTS
ML 01	Anti-age and oncoprotector	<ul style="list-style-type: none"> • For the prevention of oncopathology; • for antioxidant protection of the body; • to improve cerebral circulation; • to improve CNS function; • for the prevention of heart attack and stroke; • in autoimmune diseases 	Peptide complexes of the pineal gland (AA-1), B-link of the immune system (AA-3), liver (AA-10), resveratrol, choline bitartrate, omega-3 polyunsaturated fatty acids, vitamins E, A, C
ML 02	For the hematopoietic system, chemo-, radioprotector	<ul style="list-style-type: none"> • In anemias of various genesis; • in disorders of the hematopoietic system; • to boost immunity; • in metabolic disorders; • in the comprehensive treatment of cancer patients; • to improve the tolerance of chemoradiotherapy; • to increase the body's resistance to intoxication, infections 	Peptide complexes of the T-link of the immune system (AA-2), B-link of the immune system (AA-3), bone marrow (AA-4), liver (AA-10), omega-3 polyunsaturated fatty acids, vitamins E, B ₆ , B ₉
ML 03	For the nervous system and eyes	<ul style="list-style-type: none"> • In inflammatory and degenerative diseases of the nervous system; • for the prevention of eye diseases, also in visual strain; • in retinal diseases; • in acute cerebrovascular accidents (prevention and rehabilitation); • rehabilitation after head injuries 	Peptide complexes of the brain (AA-5), retina (AA-6), vascular wall (AA-7), astaxanthin, choline bitartrate, omega-3 polyunsaturated fatty acids, vitamins B ₁ , B ₂ , B ₆ , marigold extract
ML 04	For the cardiovascular system	<ul style="list-style-type: none"> • For the prevention of atherosclerosis, hypertension; • for the prevention of heart attack and stroke; • in varicose veins; • in trophic ulcers; • in thrombophlebitis; • in angiopathies 	Peptide complexes of the pineal gland (AA-1), vascular wall (AA-7), heart muscle (AA-8), resveratrol, rutin, omega-3 polyunsaturated fatty acids, vitamin PP
ML 05	For the respiratory system	<ul style="list-style-type: none"> • In chronic bronchitis; • in pulmonary emphysema; • in respiratory allergies; • in bronchial asthma; • for the prevention of premature aging 	Peptide complexes of the T-cell immune system (AA-2), bronchi (AA-14), lungs and stomach wall (AA-15), polyunsaturated omega-3 fatty acids, vitamins E, A, licorice root extract



REVILAB	PURPOSE	APPLICATION AREA	ACTIVE COMPONENTS
ML 06	For the gastrointestinal tract	<ul style="list-style-type: none">• In gastroduodenitis and duodenal ulcer;• in cholecystitis;• in pancreatitis;• in chronic intoxications;• in metabolic disorders;• in reduced liver function	Peptide complexes of the liver (AA-10), pancreas (AA-11), lungs and stomach wall (AA-15), polyunsaturated omega-3 fatty acids, extracts: licorice root, artichoke fruit, plantain leaves, strawberry leaves
ML 07	For the male body	<ul style="list-style-type: none">• In urinary disorders caused by prostate diseases;• in chronic prostatitis;• in prostate adenoma;• in erectile dysfunction;• to enhance the functional activity of the male body;• to normalize male hormonal status;• to normalize sperm motility	Peptide complexes of the pineal gland (AA-1), vascular wall (AA-7), testes (AA-12), bladder (AA-13), polyunsaturated omega-3 fatty acids, L-carnitine, zinc citrate
ML 08	For the female body	<ul style="list-style-type: none">• To normalize the neuroendocrine system;• to normalize cyclic processes in the body;• to normalize the reproductive system and enhance fertility;• to delay and smooth out menopause manifestations;• for cancer prevention;• for the prevention of urinary system disorders;• for the prevention of osteoporosis	Peptide complexes of the pineal gland (AA-1), vascular wall (AA-7), cartilage (AA-9), bladder (AA-13), polyunsaturated omega-3 fatty acids, resveratrol, arginine
ML 09	For the musculoskeletal system	<ul style="list-style-type: none">• In arthrosis and arthritis;• in rheumatism;• in osteochondrosis;• in osteoporosis;• in gout;• in rehabilitation after injuries	Peptide complexes of the B-cell immune system (AA-3), vascular wall (AA-7), cartilage (AA-9), chondroitin sulfate, polyunsaturated omega-3 fatty acids, superoxide dismutase (SOD) and catalase, carnosine

rēvilab[®] Preparation

The presented preparations combine the most advanced elements from the world of anti-age medicine and cosmetology. Each nutraceutical is enriched with powerful active components that work at the cellular level, triggering natural renewal mechanisms. The body is restored from within: aging processes slow down, the function of internal organs and systems normalizes, metabolism is activated and balanced, and detoxification is enhanced.

rēvilab[®] pro elements



Revilab pro elements is the latest development, an unequivocal alternative to all previously created mineral supplements. Its unique composition based on macro- and microelements, minerals, and vitamins aids in correcting biochemical processes, recharging mitochondria, and optimizing the immune system's function. The synergy of components leads to active skin regeneration, stimulates collagen synthesis, positively influences the production of sex hormones, significantly improves reproductive health, provides antioxidant protection for the body, and minimizes the signs of adverse environmental effects.

- Stimulates the growth of new cells
- Replenishes the necessary amount of nutrients for proper mitochondrial function
- Maintains optimal levels of vitamins and minerals for the synthesis of sex hormones
- Replenishes collagen deficiency in the body
- Significantly improves skin condition, preventing the appearance of wrinkles
- Strengthens the structure of cartilage tissue, supports joint mobility
- Helps slow down the aging processes of the body

rēvilab[®] peptide collagen



An innovative peptide preparation created in accordance with modern requirements of cosmetology and clinical practice. It has high protective and antioxidant effects on the entire body.

The uniqueness of Revilab peptide collagen lies in the content of three types of collagen combined with a fat-soluble form of vitamin C, which is necessary for the proper progression of all stages of collagen formation and assembly in the body. The cartilage tissue peptide in the composition has a targeted effect on connective tissue cells, signaling the initiation of collagen synthesis in vessels, joints, bones, and skin. Natural native collagen stimulates tissue metabolism, accelerates fibroblast proliferation, and prevents matrix aging. Revilab peptide collagen is a source of amino acids and peptides necessary for the synthesis of one's own collagen.

- Improves the condition of skin, hair, and nails, smooths fine wrinkles, increases skin firmness and elasticity, slows down aging processes
- Increases joint mobility, strengthens ligaments
- Restores collagen reserves, stimulates the synthesis of own collagen
- Strengthens the structure of cartilage tissue, ensuring its strength and elasticity

rēvilab[®] anti-A.G.E.

Revilab Anti-A.G.E. is a highly effective anti-aging complex with powerful deglycation and antioxidant effects, ensuring the fastest and most intensive action in combating protein degradation and age-related skin changes. Its active ingredients complement and enhance each other's effects, allowing the glycation process to be slowed down and providing protection against advanced glycation end-products (A.G.E.).

Revilab Anti-A.G.E. protects the skin from premature wrinkles, shields blood vessels from damage, protects the skin from ROS exposure, and guards cell DNA from mutational changes. The preparation helps maintain not only radiant, youthful, and firm skin but also healthy internal organs, strong muscles, and sturdy bones. Additionally, Revilab Anti-A.G.E. protects the body from any consequences of aggressive environmental impacts: unbalanced nutrition, disrupted daily routines, physical and mental overstrain, and adverse environmental effects.

- Provides powerful deglycation and antioxidant effects
- Intensively affects protein degradation and age-related skin changes
- Helps smooth wrinkles and increase skin firmness
- Helps achieve a prolonged rejuvenating effect on all protein structures of the body

* For maximum rejuvenating effect, it is recommended to use the Revilab Preparation series products in combination.



rēvilab Preparation unique products in the fight against aging

Active components: glycine, calcium citrate, magnesium citrate, mineral premix (iron, zinc, copper, selenium, iodine, manganese), zinc citrate, vitamin A, vitamin E, vitamin D3, chromium picolinate, vitamin B6.

Active components: peptide complex AA-9 (cartilage tissue peptide), fish collagen, collagen from giant squid (native collagen), ascorbyl palmitate (fat-soluble form of vitamin C).

Active components: rosemary, carnosine (beta-alanyl-L-histidine), astaxanthin, taurine, alpha-lipoic acid (vitamin N).

revilab® SL



rēvilab[®] SL

01—10

Peptide complexes for sublingual use



Recommendations for the use of revilab SL preparations:

use in the morning, distributing 4-6
drops over the oral mucosa.

10 ml

The first series of multicomponent sublingual preparations in the world, created to prevent dysfunctions of various systems and organs, and to correct existing diseases.

The effectiveness of the sublingual form is due to the anatomy and physiology of the oral cavity. The preparation enters the sublingual space, which is densely networked with veins located superficially under a thin layer of mucous membrane. Active components penetrate through the mucosa and directly enter the bloodstream of the superior vena cava, bypassing the portal vein system and primary transformation in the liver.

Due to direct entry into the systemic circulation, the onset of effect is several times faster than with oral administration. The bioavailability of active substances in sublingual application reaches maximum values, as the destruction of peptides and plant extracts by the aggressive environment of the stomach and intestines is avoided.

The components of the rēvilab[®] SL series — peptides and plant-based extracts

— perfectly complement each other and target the root cause of diseases, effectively preventing premature aging of the body. Each preparation in the series is a balanced formula where peptide complexes enhance the action of plant extracts, providing a synergistic effect.

The sublingual form ensures not only high efficiency but also maximum convenience of use. The preparation does not require water intake and can be used in any conditions, which is especially important for people with an active lifestyle. The compact packaging allows you to always have the preparation at hand.

REVILAB	PURPOSE	APPLICATION AREA	ACTIVE COMPONENTS
SL 01	For the cardiovascular system	<ul style="list-style-type: none"> • For the prevention of heart attack and stroke; • during rehabilitation after stroke, heart attack; • for varicose veins; • for arterial hypertension; • for trophic ulcers; • for thrombophlebitis; • for atherosclerosis of vessels and its prevention; • for angiopathies 	Peptide complexes of the vascular wall (AA-7), heart muscle (AA-8), extracts: licorice, propolis, mint, essential oils: chamomile, clove, dihydroquercetin
SL 02	For the nervous system and eyes	<ul style="list-style-type: none"> • For inflammatory and degenerative diseases of the nervous system; • for the prevention of eye diseases, also for visual strain; • for retinal diseases; • acute cerebrovascular accidents (prevention and rehabilitation); • rehabilitation after head injuries 	Peptide complexes of the brain (AA-5), retina (AA-6), vascular wall (AA-7), extracts: licorice, propolis, mint, essential oils: chamomile, clove, dihydroquercetin
SL 03	For the immune and neuroendocrine systems	<ul style="list-style-type: none"> • In cases of immunodeficiencies; • in cases of allergies; • in autoimmune diseases; • for cancer prevention; • after illnesses; • in various chronic intoxications; • during rehabilitation after heart attack and stroke; • after surgeries 	Peptide complexes of the pineal gland (AA-1), T-cell immune system (AA-2), B-cell immune system (AA-3), extracts: licorice, propolis, mint, essential oils: chamomile, clove, dihydroquercetin
SL 04	For the musculoskeletal system	<ul style="list-style-type: none"> • In cases of arthrosis and arthritis; • in cases of rheumatism; • in cases of osteochondrosis; • in cases of osteoporosis; • in cases of gout; • during rehabilitation after injuries 	Peptide complexes of the B-cell immune system (AA-3), cartilage (AA-9), muscles (AA-17), extracts: licorice, propolis, mint, essential oils: chamomile, clove, dihydroquercetin
SL 05	For the gastrointestinal tract	<ul style="list-style-type: none"> • In cases of chronic pancreatitis; • in cases of cholecystitis; • in cases of liver cirrhosis; • in chronic intoxications; • in metabolic disorders; • in decreased liver function 	Peptide complexes of the liver (AA-10), pancreas (AA-11), lungs and stomach wall (AA-15), extracts: licorice, propolis, mint, essential oils: chamomile, clove, dihydroquercetin
SL 06	For the respiratory system	<ul style="list-style-type: none"> • In cases of chronic bronchitis; • in cases of pulmonary emphysema; • in respiratory allergies; • in bronchial asthma 	Peptide complexes of the B-cell immune system (AA-3), bronchi (AA-14), lungs and stomach wall (AA-15), extracts: licorice, propolis, mint, essential oils: chamomile, clove, dihydroquercetin



REVILAB	PURPOSE	APPLICATION AREA	ACTIVE COMPONENTS
SL 07	For the hematopoietic system	<ul style="list-style-type: none"> • In cases of anemia of various origins; • in disorders of the hematopoietic system; • in the comprehensive treatment of cancer patients; • to boost immunity; • in postoperative complications, trophic disorders 	Peptide complexes of the B-cell immune system (AA-3), bone marrow (AA-4), vascular wall (AA-7), vitamins B ₁ , B ₁₂ , extracts: licorice, propolis, mint, essential oils: chamomile, clove, dihydroquercetin
SL 08	For the urinary system	<ul style="list-style-type: none"> • For the prevention of urinary system diseases; • in urinary disorders; • in chronic cystitis and pyelonephritis 	Peptide complexes of the T-cell immune system (AA-2), vascular wall (AA-7), bladder (AA-13), extracts: licorice, propolis, mint, essential oils: chamomile, clove, dihydroquercetin
SL 09	For the male body	<ul style="list-style-type: none"> • In urinary disorders caused by prostate diseases; • in chronic prostatitis; • in prostate adenoma; • in erectile dysfunction; • to enhance the functional activity of the male body; • to normalize male hormonal status; • to normalize sperm motility 	Peptide complexes of the pineal gland (AA-1), testes (AA-12), bladder (AA-13), prostate (AA-16), extracts: licorice, propolis, mint, essential oils: chamomile, clove, dihydroquercetin
SL 10	For the female body	<ul style="list-style-type: none"> • To normalize the function of the neuroendocrine system; • to normalize all cyclic processes in the body; • to normalize the reproductive system and enhance fertility; • for delaying and smoothing the manifestations of menopause; • for the prevention of oncological diseases; • prevention of urinary system dysfunctions, especially during the climacteric period 	Peptide complexes of the pineal gland (AA-1), vascular wall (AA-7), bladder (AA-13), extracts: licorice, propolis, mint, essential oils: chamomile, clove, dihydroquercetin

SUBLINGUAL ADMINISTRATION OF REVILAB SL

Application of the recommended dose of Revilab SL in the sublingual area.



Scheme 1. Advantages of sublingual administration of the drug

The sublingual method is optimal for the administration of highly active substances in small concentrations, such as peptides. Bioavailability is ensured by the high density of venous and lymphatic vessels in the mucous and submucous layers of the sublingual area and is comparable to that of subcutaneous injections. Substances introduced into the body via sublingual administration are not exposed to digestive enzymes, the aggressive environment of gastric juice, and enter the bloodstream bypassing the liver. In official WHO documents, the sublingual method is recognized as a worthy alternative to subcutaneous administration.

2-5 min

PC PRO



02
ПЕПТИДНЫЙ КОМПЛЕКС ПРО
10 ml / 0.33 fl. oz.

ПЕПТИДНЫЙ КОМПЛЕКС ПРО
А-3 А-9 А-14

ПЕПТИДНЫЙ КОМПЛЕКС ПРО
А-3 А-9 А-14

ПЕПТИДНЫЙ КОМПЛЕКС ПРО
А-3 А-9 А-14

03
ПЕПТИДНЫЙ КОМПЛЕКС ПРО
10 ml / 0.33 fl. oz.

ПЕПТИДНЫЙ КОМПЛЕКС ПРО
А-6

ПЕПТИДНЫЙ КОМПЛЕКС ПРО
А-6

01
ПЕПТИДНЫЙ КОМПЛЕКС ПРО
10 ml / 0.33 fl. oz.

ПЕПТИДНЫЙ КОМПЛЕКС ПРО
А-1

13
ПЕПТИДНЫЙ КОМПЛЕКС ПРО
10 ml / 0.33 fl. oz.

ПЕПТИДНЫЙ КОМПЛЕКС ПРО
А-13

06
ПЕПТИДНЫЙ КОМПЛЕКС ПРО
10 ml / 0.33 fl. oz.

ПЕПТИДНЫЙ КОМПЛЕКС ПРО
А-3 А-9 А-18 А-16

12
ПЕПТИДНЫЙ КОМПЛЕКС ПРО
10 ml / 0.33 fl. oz.

ПЕПТИДНЫЙ КОМПЛЕКС ПРО
А-1 А-4 А-7 А-10

12
ПЕПТИДНЫЙ КОМПЛЕКС ПРО
10 ml / 0.33 fl. oz.

ПЕПТИДНЫЙ КОМПЛЕКС ПРО
А-1 А-4 А-7 А-10

06
ПЕПТИДНЫЙ КОМПЛЕКС ПРО
10 ml / 0.33 fl. oz.

ПЕПТИДНЫЙ КОМПЛЕКС ПРО
А-3 А-9 А-18 А-16



PC PRO

01—14

Peptide complexes in solution, natural peptides



Application Recommendations for Peptide Complexes in solution:

apply 6-8 drops to the inner surface of the forearm and rub until fully absorbed. The course duration is 1-3 months.
10 ml

Before the release of this joint development by Peptides® and the St. Petersburg Institute of Bioregulation and Gerontology, peptide bioregulators of natural origin were mainly available in two forms: either as injectable preparations or as encapsulated products for oral intake. There was a need to create a more convenient and physiological alternative.

As a result of the fruitful work of our scientists, an innovative series of natural peptide bioregulators for external use was developed – "Peptide Complexes" (PC PRO 01-14). This unique form of delivering bioactive peptides through the skin has stood the test of time and proven its high effectiveness in clinical studies.

The obtained peptide complexes in solution form are applied according to a specially developed method. The preparation is applied to the inner surface of the forearm along the projection of the superficial veins and rubbed until fully absorbed. This area is chosen deliberately: the skin here has optimal permeability, and the proximity of blood and lymphat-

ic vessels ensures the most effective absorption of peptide molecules.

7-15 minutes after application, the peptides bind with the dendritic cells of the skin – unique cells of the immune system capable of capturing and transporting biologically active molecules. Dendritic cells carry out targeted transport of peptides to the regional lymph nodes, where the peptides "transplant" – they enter the bloodstream and are carried with the blood flow to the necessary organs and tissues. Thanks to the tissue specificity of natural peptides, each complex has a selective action and targets specific cells, ensuring the normalization of metabolic processes.

PRO Peptide Complexes

PC	PURPOSE	APPLICATION AREA	ACTIVE COMPONENTS
PC No. 1 PRO	For arteries and heart	<ul style="list-style-type: none"> • Strengthening the vascular wall and heart muscle • rehabilitation of post-infarction and post-stroke patients • prevention of hypertension • prevention of heart attack and stroke 	Vascular peptide complex (A-3), heart muscle (A-14), BAC "Neovitin"®
PC No. 2 PRO	For the central nervous system and weather sensitivity	<ul style="list-style-type: none"> • Reducing the reaction to weather sensitivity phenomena • prevention of migraines and reduction of their manifestations • prevention of coronary heart disease, heart failure • prevention and recovery after myocarditis • prevention of myocardial dystrophy and acceleration of the recovery process 	Vascular peptide complex (A-3), brain (A-5), heart muscle (A-14), BAC "Neovitin"®
PC No. 3 PRO	For the immune system	<ul style="list-style-type: none"> • Increasing lifespan • Correction of immune pathologies • stimulation of regeneration of all organs and tissues • prevention of oncopathologies 	Thymus peptide complex (A-6), BAC "Neovitin"®
PC No. 4 PRO	For bone and joint tissue	<ul style="list-style-type: none"> • Prevention of arthrosis and arthritis • prevention of rheumatism • prevention of osteochondrosis and support during recovery • prevention of premature joint aging 	Vascular peptide complex (A-3), cartilage (A-4), thymus (A-6), BAC "Neovitin"®
PC No. 5 PRO	For the thyroid gland	<ul style="list-style-type: none"> • prevention of thyroid diseases • recovery after hypo-, hyperthyroidism • prevention of autoimmune thyroiditis 	Thyroid peptide complex (A-2), BAC "Neovitin"®
PC No. 6 PRO	For the male reproductive system	<ul style="list-style-type: none"> • Support in the comprehensive treatment and prevention of chronic prostatitis • prevention and assistance in the comprehensive treatment of prostate adenoma • prevention of infertility and assistance in comprehensive infertility treatment • prevention of erectile dysfunction and recovery during treatment 	Vascular peptide complex (A-3), bladder (A-12), testes (A-13), prostate gland (A-16), BAC "Neovitin"®
PC No. 7 PRO	For the female reproductive system	<ul style="list-style-type: none"> • Prevention of urogenital syndrome • restoration in case of menstrual function disorders • to delay menopause • prevention of climacteric osteoporosis, hot flashes • assistance with fertility disorders • increasing libido 	Vascular peptide complex (A-3), thymus (A-6), bladder (A-12), ovaries (A-15), BAC "Neovitin"®
PC No. 8 PRO	For the respiratory system	<ul style="list-style-type: none"> • Prevention and recovery after chronic bronchitis • prevention of pulmonary emphysema • prevention of respiratory allergies • prevention of bronchial asthma 	Vascular peptide complex (A-3), thymus (A-6), bronchial mucosa (A-19), BAC "Neovitin"®



PC	PURPOSE	APPLICATION AREA	ACTIVE COMPONENTS
PC No. 9 PRO	For the skin	<ul style="list-style-type: none">• Improvement of skin color, tone, relief, and texture• prevention of skin diseases and support during recovery after• prevention of premature skin aging	Vascular peptide complex (A-3), cartilage (A-4), thymus (A-6), liver (A-7), BAC "Neovitin"®
PC No. 10 PRO	For veins	<ul style="list-style-type: none">• Prevention of thrombosis• prevention of varicose veins• prevention and assistance in hemorrhoid treatment• prevention of thrombophlebitis• support in the treatment of trophic ulcers	Vascular peptide complex (A-3), BAC "Neovitin"®
PC No. 11 PRO	For kidneys, bladder	<ul style="list-style-type: none">• Prevention of renal failure• recovery in chronic pyelonephritis, cystitis• Improves condition in urinary tract development anomalies• prevention and support in urolithiasis treatment• prevention of glomerulonephritis• prevention in nephroptosis	Thymus peptide complex (A-6), kidneys (A-9), bladder (A-12), BAC "Neovitin"®
PC No. 12 PRO	For the gastrointestinal tract	<ul style="list-style-type: none">• Support in gastric and duodenal ulcer disease• prevention of gastrointestinal oncopathology• prevention of digestive disorders• prevention and recovery of the gastrointestinal tract in gastritis	Pancreatic peptide complex (A-1), thymus (A-6), liver (A-7), gastric mucosa (A-10), BAC "Neovitin"®
PC No. 13 PRO	For vision and hearing	<ul style="list-style-type: none">• Support in retinal degeneration• assistance in early stages of glaucoma and cataracts• support in the treatment of retinal angiopathy against hypertension and diabetes• assistance in optic nerve atrophy• prevention and recovery of vitreous body pathologies• prevention and recovery in accommodation spasm• recovery in early stages of sensorineural hearing loss• prevention of otitis and recovery from otitis consequences• recovery in eardrum injuries• recovery after acoustic trauma, contusion	Vascular peptide complex (A-3), cartilage (A-4), brain (A-5), eye tissues (A-11), BAC "Neovitin"®
PC No. 14 PRO	For the neuroendocrine system	<ul style="list-style-type: none">• For normalizing all cyclic processes in the body• assistance in regulating the reproductive system• enhancing reproductive capability• assistance in delaying menopause and mitigating its effects• strengthening and normalizing immunity• assistance in increasing lifespan• prevention of oncological diseases	Pineal gland peptide complex (A-8), BAC "Neovitin"®

Prime Peptide®

Innovative solutions
for health and active longevity

Modern scientific achievements open a new era of health maintenance and active longevity. At the core of this revolution is the understanding of the key role of peptides—molecular regulators that control recovery and protection processes at the cellular level.

Product line **Prime Peptide®** represents innovative complexes based on bioactive peptides, specially designed to affect various body systems. Created at the intersection of advanced scientific research and modern technologies, our products embody a fundamentally new approach to health maintenance—activation of the body's natural regeneration and protection mechanisms.

Each product in the **Prime Peptide®** line is enriched with powerful active components that work at the cellular level, triggering natural renewal mechanisms.

The formulas of the complexes contain bioactive peptides combined with carefully selected components that work synergistically and enhance each other's effects. These are not just supplements—they are targeted solutions for specific body needs.

All products in the line have undergone comprehensive laboratory testing, their effectiveness is confirmed by clinical data, and their mechanisms of action are studied at the molecular and cellular levels.

MADE IN
EU



PRIME PEP
Omega
Peptide complex
PC T
Dietary
supplement
PP
PO
HV

PRIME PEP
Joints
Peptide complex
ESM
Dietary
supplement
PP
PO
HVP

PRIME PEPTIDE
Protect
Peptide complex
REG/B4, EP/K2
Dietary
supplement
PPCB
POPP
HVPJ

PRIME PEPTIDE
Biotics
Peptide complex
RO/PRE/POST
Dietary
supplement
PPJC
POVP
IPPB

PRIME PEPTIDE
Brain
Peptide complex
PH AGAP
Dietary
supplement
PPCB
POPP
HVPJ

PRIME PEPTIDE
Collagen
Peptide complex
AEN
Dietary
supplement
PPCB
POPP
HVPJ

Prime Peptide



Prime Peptide® Protect

Cellular protection with bioactive mushroom peptides


An innovative peptide complex for comprehensive support of cellular health and protection of the body from oxidative stress.

The product is based on a tissue regeneration peptide that effectively neutralizes free radical processes and influences the activity of key antioxidant enzymes, maintaining cellular homeostasis. The formula is enhanced with a pineal gland peptide with pronounced rejuvenating activity. It increases the expression of the p53 protein, regulates the cell cycle, and prevents mutations. Additional comprehensive protection is provided by broccoli extract and a complex of mushroom peptides.

Prime Peptide® Protect is a unique combination of active natural bioregulators, developed based on advanced scientific research in the field of cellular regeneration and antioxidant protection of the body.

Active components: tissue regeneration peptide with vitamin B4, pineal gland peptide with vitamin K2, bioactive mushroom peptides (Brazilian agaricus, reishi, shiitake, maitake, snow fungus), broccoli extract and indole-3-carbinol, choline, zinc, selenium.

Usage recommendations: adults take 3 capsules a day with a small amount of liquid, without chewing.

 90 capsules

Prime Peptide® Brain


Support for the cognitive system with magnesium, choline and nervonic acid

An innovative peptide complex for supporting brain functions and enhancing cognitive abilities. Prime Peptide® Brain is an advanced solution developed based on the latest achievements in neurobiology and peptide technologies to protect nerve cells and improve brain function.

At the core of the product is a unique neuroprotective brain tetrapeptide that crosses the blood-brain barrier and has a comprehensive effect on the nervous system. This peptide regulates neurometabolic processes, stimulates neuron regeneration, and contributes to the improvement of cognitive functions. It activates neurotransmitter synthesis, increases serotonin levels, stabilizes emotional state, and modulates NMDA receptor activity. The formula is supplemented with magnesium, choline, gamma-aminobutyric acid, and vitamins for comprehensive brain support.

Active components: brain peptide, magnesium, choline, gamma-aminobutyric acid, vitamin C, nervonic acid, zinc, biotin.

Usage recommendations: adults take 3 capsules per day with a small amount of liquid, without chewing.

 90 capsules



Prime Peptide® Biotics


Support for stomach, intestines, and digestion

A complex for restoring microbiota and supporting gastrointestinal health. Prime Peptide® Biotics is a complete "three-in-one" biotic system: probiotics, prebiotic, and postbiotic combined with a low-molecular-weight gastro-protective intestinal peptide capable of restoring the stomach and intestinal epithelium, protecting mucous membranes, and reducing inflammatory reactions caused by stress and external influences.

Probiotics — seven live strains of lactobacilli selected for synergistic work: they support microbial balance, improve digestion, and enhance the barrier and immunomodulatory functions of the intestinal mucosa. **Prebiotic** — chicory inulin creates a nourishing environment for beneficial microflora and stimulates its growth. **Postbiotic** — tyndallized lactobacilli provide additional immune support and stabilize the microbiotic environment even under adverse conditions.

Active components: intestinal peptide, prebiotic — inulin (from chicory), probiotic complex (L. acidophilus SGL11, L. rhamnosus SGL06, L. Fermentum SGL10, L. kefir SGL13, L. plantarum SGL07, L. salivarius SGL03, L. reuteri SGL01), postbiotic — tyndallized L. casei SGL15.

Usage recommendations: adults take 3 capsules a day with a small amount of liquid, without chewing.

 90 capsules

Prime Peptide® Omega Immune


Immune system peptides, thymus peptide with Omega 3-6-9

A unique nutraceutical complex created based on plant sources of essential fatty acids that support cell health, the immune system, and antioxidant protection, combined with a bioactive immune system peptide targeting the thymus gland. Provides immune support, cell protection, and regulation of inflammatory processes.

The product is based on a highly active peptide bioregulator capable of modulating immune system functions, slowing thymus aging, and providing comprehensive protection against age-related and external stress factors. It activates the expression of immune defense genes, supports the T-cell link of immunity, and stimulates T-lymphocyte differentiation. The formula is supplemented with a balanced complex of Omega 3-6-9 fatty acids, vitamins C, E, D3, and zinc for comprehensive body support.

Active components: immune system peptide (thymus peptide), omega 3-6-9 (alpha-linolenic acid (ALA), linoleic, oleic acids), vitamins C, E, and D3, zinc.

Usage recommendations: adults take 3 capsules a day with a small amount of liquid, without chewing.

 90 capsules

Prime Peptide



Prime Peptide® Collagen


Health and beauty of skin, hair, and nails

An innovative peptide complex for the restoration and strengthening of skin, hair, and connective tissue. Prime Peptide® Collagen is a high-tech solution combining advanced achievements in peptide technology and cellular regeneration.

The product is based on a chondroprotective cartilage peptide that actively supports the renewal of connective tissue, stimulates the synthesis of collagen and hyaluronic acid, and slows down age-related changes. It enhances the reparative abilities of cells, activates genes responsible for tissue regeneration, and provides reliable antioxidant protection. The formula is enriched with concentrated marine collagen with a high content of key amino acids: glycine, proline, hydroxyproline, alanine, and lysine. Bioavailable forms of minerals — calcium bisglycinate chelate, copper gluconate, vitamin C, and biotin — enhance the synthesis of collagen and keratin.

Active components: cartilage peptide, marine collagen concentrate, calcium (calcium bisglycinate), vitamin C (ascorbic acid), copper (copper gluconate), biotin.

Usage recommendations: adults take 3 capsules a day with a small amount of liquid, without chewing.

 90 capsules

Prime Peptide® Joints


Joint health support

A joint health complex developed based on the latest advancements in biochemistry and regenerative medicine. Prime Peptide® Joints is an advanced solution for maintaining and restoring the musculoskeletal system, combining the power of natural peptides with modern delivery technologies of active components.

At the core of the formula is a chondroprotective peptide for cartilage and joints with pronounced chondroprotective and osteoprotective properties. Thanks to a specific amino acid sequence, it acts on joint tissue cells, initiating natural recovery and protection processes. The effect is enhanced by the liposomal form of glucosamine and MSM using SNL technology, which ensures the delivery of components to joint cells, significantly increasing bioavailability. The formula is enriched with palmitoylethanolamide (PEA) — a natural inflammation regulator, and a connective tissue peptide from eggshell matrix.

Active components: cartilage peptide, connective tissue peptide, liposomal glucosamine and MSM, palmitoylethanolamide, vitamin C.

Usage recommendations: adults take 3 capsules per day with a small amount of liquid, without chewing.

 90 capsules



Mesotel® Ultra

Next-generation revitalizing complex

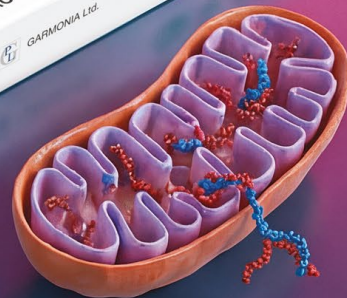
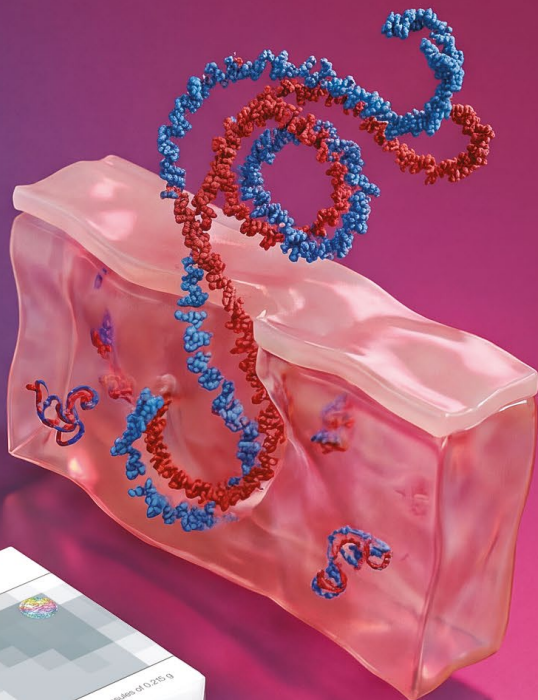
An innovative product for supporting health at the cellular level, created based on choline, peptide complexes of the brain and blood vessels, as well as natural plant extracts. Mesotel® Ultra slows down aging processes, detoxifies the body, and improves overall well-being.

The formula is based on two targeted peptide complexes: AA-5 for the brain (Glu-Asp-Arg) with neuroprotective action, which normalizes metabolism in CNS cells and stimulates neuron regeneration, and AA-7 for the vascular wall (Lys-Glu-Asp), improving vessel elasticity and reducing the risk of thrombosis. The formula is enhanced with a synergistic complex of plant extracts: gotu kola for strengthening blood vessels and microcirculation, goji berries for antioxidant and hepatoprotective protection, and grape skin extract with resveratrol for heart health. Choline supports memory as a precursor of acetylcholine, and alpha-lipoic acid provides protection against oxidative stress.

Active components: choline bitartrate, brain peptide complex AA-5 (Glu-Asp-Arg), vascular wall peptide complex AA-7 (Lys-Glu-Asp), gotu kola extract, goji berry extract, alpha-lipoic acid, eucalyptus leaf extract, grape skin extract, red grapefruit juice.

Usage recommendations: adults and children over 14 years, 1 teaspoon (5.2 g) 1–2 times a day during meals. Duration of intake is 1 month. Shake before use.

Cytomaxes



Cytogens

Peptide bioregulators based on synthesized peptides



Recommendations for the use of cyto-gens: 1-2 capsules 1-2 times a day with meals. Duration of intake is 10-30 days. It is advisable to repeat the course in 4-6 months.

20/60 capsules of 0.215 g

Science does not stand still, and over time, an active sequence of amino acids was identified that triggers the necessary changes in cells. Thus, peptide bioregulators based on short peptides – cytogens – were created.

Short peptides provide a faster effect, initially activating functions and restoring internal organs. Their targeted action allows for noticeable results within the first weeks of use. Subsequently, to continue the positive dynamics in therapy and consolidate the achieved effect, it is recommended to start taking cytomaxes – peptide bioregulators based on natural polypeptides.






Cytogens can be taken for preventive purposes to maintain health and prevent age-related changes, as well as for correcting various conditions in combination with drug therapy. To prevent age-related changes, dysfunctions of various systems and organs, it is recommended to take one capsule twice a day during meals for 30 days. The duration of intake is 10-30 days, and the course is advisable to repeat every 4-6 months to maintain a stable result.

For correcting existing disorders as part of complex therapy and to enhance


recovery processes, a more intensive intake is suggested – 2 capsules 2-3 times a day for 30 days. This approach allows activating regenerative mechanisms at the cellular level and contributes to a faster improvement in the functional state of organs and systems.

Synthesized short peptides possess high bioavailability, ensuring their effective integration into cellular regulation processes. Due to their precise structure and targeted action, cytogens are the optimal choice for those seeking a quick start to a wellness program with a subsequent transition to maintenance therapy with natural peptide complexes.

Cytogens

NAME	PURPOSE	APPLICATION AREA	ACTIVE COMPONENT
VESUGEN® 	Contributes to the normalization of the functional state of blood vessels	<ul style="list-style-type: none"> • For varicose veins; • for arterial hypertension; • for trophic ulcers; • for thrombophlebitis; • for vascular atherosclerosis; • for angiopathies 	Peptide complex of vessels (AC-2)
CRYSTAGEN® 	Contributes to the normalization of the functional state of the immune system	<ul style="list-style-type: none"> • In cases of immunodeficiency; • after past illnesses; • in cases of various chronic intoxications; • during rehabilitation after heart attack and stroke; • after surgeries; • for the prevention of oncological diseases 	Peptide complex of the thymus (AC-6)
CARTALAX® 	Promotes normalization of cartilage tissue function and the musculoskeletal system	<ul style="list-style-type: none"> • In cases of arthrosis and arthritis; • in cases of rheumatism; • in cases of osteochondrosis; • in cases of osteoporosis; • in cases of gout 	Peptide complex of cartilage (AC-4)
OVAGEN® 	Promotes normalization of liver and gastrointestinal tract function	<ul style="list-style-type: none"> • In cases of atherosclerosis and obesity; • in cases of cholecystitis; • in cases of liver cirrhosis; • in cases of chronic intoxications; • in cases of metabolic disorders; • in cases of reduced liver function 	Peptide complex of the liver (AC-3)
PINEALON® 	Promotes normalization of the functional activity of brain cells	<ul style="list-style-type: none"> • During rehabilitation after stroke; • in cases of memory decline and impaired concentration; • in cases of Alzheimer's and Parkinson's diseases; • in cases of multiple sclerosis; • in cases of chronic fatigue syndrome; • in cases of depression 	Peptide complex of the brain (AC-5)

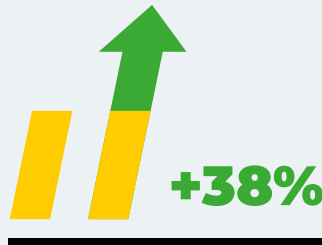


NAME	PURPOSE	APPLICATION AREA	ACTIVE COMPONENT
CHONLUTEN® 	Promotes normalization of bronchopulmonary system and gastric mucosa function	<ul style="list-style-type: none"> • In cases of chronic bronchitis; • in cases of pulmonary emphysema; • in cases of bronchial asthma; • in cases of respiratory allergies 	Peptide complex of the bronchopulmonary tree (AC-7)

ACTION OF PEPTIDE BIOREGULATORS

Research by the St. Petersburg Institute of Bioregulation and Gerontology

EXPERIENCE OF USING
CYTOMAXES
AND
CYTOGENS OVER
 SEVERAL DECADES
 AMONG
15 MILLION
 CONSUMERS



Lifespan
 increases
 by **30–38%**

75-95%

— average effectiveness of peptide-based products







GPL[®] — peptide complex geroprotectors

We present fundamentally new, first complex geroprotectors of a new model based on peptide extracts, created as a result of long-term collaboration between Peptides and the St. Petersburg Institute of Bioregulation and Gerontology — **GPL[®]**.

The new products for him and her are based on a principle that has proven successful in the **Revilab series**, namely, the most effective approach is individualized for each person. Peptides, their proportions, and dosages are selected according to the company's current understanding of aging processes, distress syndrome, early aging of the reproductive system, as well as the nature of changes developing in post-COVID syndrome.

These are generally closely linked with the degradation of the immune and neuroendocrine systems, the onset of early menopause, vascular wall damage, and brain tissue impairment.

The new products embody the idea of a gradual restoration of the neuroendocrine axis using minimal doses of targeted medications in the most physiological manner. As the structure and nature of known pathologies have changed, some substances are used more, others less. Additionally, the peptide group in the new products works with the support of alpha-lipoic (thioctic) acid, which offers a range of benefits—improving CNS function, providing antioxidant and anti-glyca-

tion effects, and optimizing the metabolism of sex hormones.

The main goal of the new **GPL[®]** products is to minimize post-COVID changes and disorders in the body, restoring the function of the vascular, nervous, endocrine, and reproductive systems. Broadly speaking, the aim of creating new geroprotectors is to help everyone normalize and improve the body's overall function to enjoy all the colors of life.



Effects of using GPL®



Minimize post-COVID changes and disorders in the body



Comprehensively restore the functioning of the vascular, nervous, endocrine and reproductive systems



Restore immunity



Normalize pineal gland activity and set the correct rhythm for adrenal function



Harmonize the overall state of the body through physiological restoration of the neuroendocrine axis



Restore metabolic processes, combat insulin resistance of the reproductive system



Slow down the aging processes

GPL® Man

65 mg of peptides per capsule

GPL® Man is developed considering the characteristics of the male body. It helps restore balance in men's bodies and prolongs youth, maintaining health.

The GPL® Man formula uses increased dosages of pineal gland, liver, and pancreas extracts, while brain, vessel, and testicular extracts are used in standard doses. This distribution of components allows for a greater focus on detoxification and insulin resistance, and very smoothly affects the neuroendocrine system. This is an individual approach to maintaining health and harmony in the male body.

- Pineal gland peptides 0.5 eq*
- Brain peptides 1 eq*
- Vascular peptides 1 eq*
- Liver peptides 1.5 eq*
- Pancreatic peptides 1.5 eq*
- Testicular peptides 1 eq*
- Alpha-lipoic acid

Usage recommendations:

Men should take 1 capsule once a day with meals. Duration of intake is 1 month. If necessary, the course can be repeated in 3-6 months.

GPL® Femme

65 mg of peptides per capsule

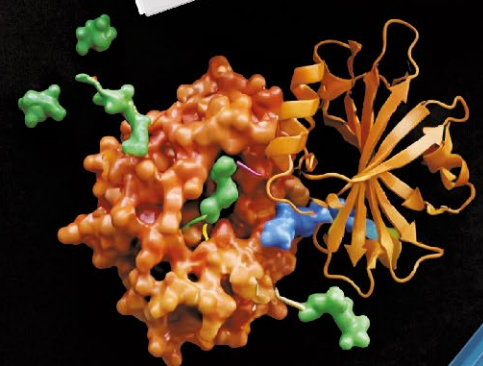
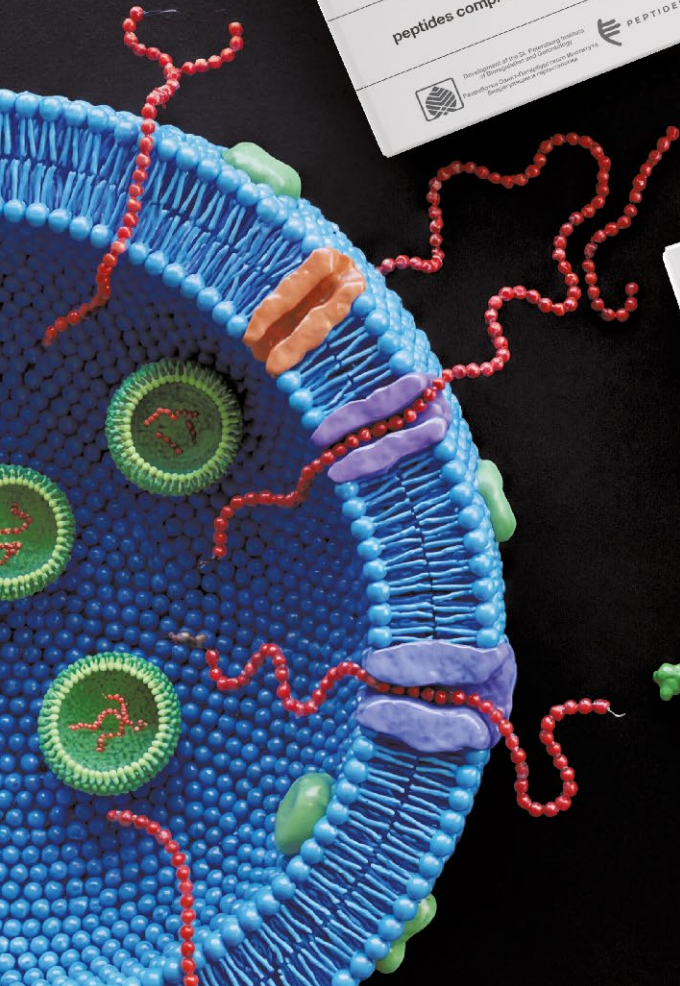
GPL® Femme is a fundamentally new comprehensive geroprotector based on peptide extracts, created specifically for women. The GPL® Femme formula uses an optimized dosage of pineal gland and ovarian extracts. Working as smoothly as possible, they help avoid sharp fluctuations in the hormonal sphere. Brain and vessel extracts are used in an optimized dose specifically for the tasks of preserving and restoring the female body.

- Pineal gland peptides 0.5 eq*
- Brain peptides 1 eq*
- Vascular peptides 1 eq*
- Liver peptides 1.5 eq*
- Thyroid peptides 1.5 eq*
- Ovarian peptides 1 eq*
- Alpha-lipoic acid

Usage recommendations:

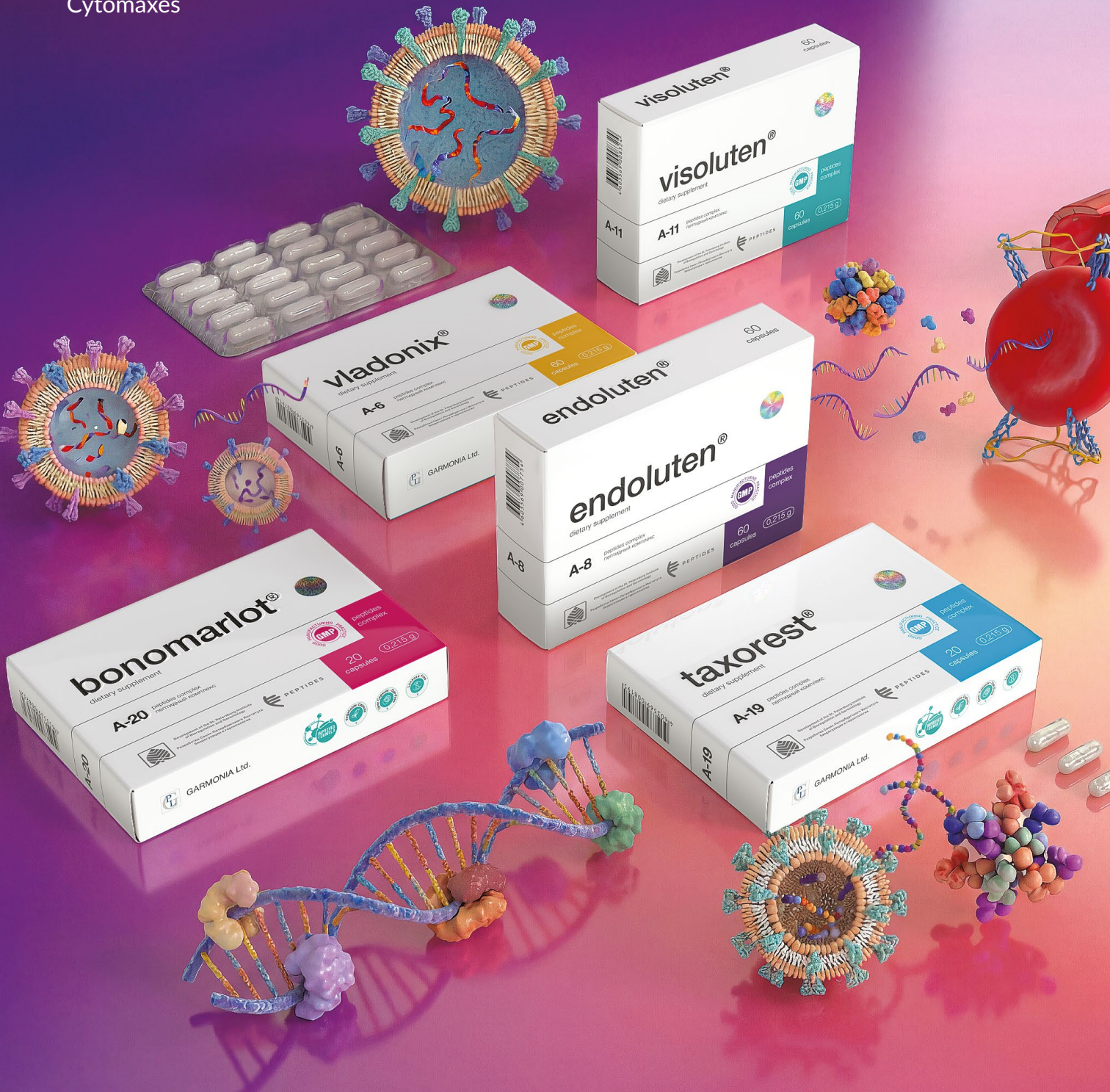
Women should take 1 capsule once a day with meals. Duration of intake is 1 month. If necessary, the course can be repeated in 3-6 months.

*Equivalent — the standard, accepted content of the active ingredient in one capsule for this preparation.



COMING SOON

Cytomaxes



Cytomaxes

Peptide bioregulators based on natural peptides

Cytomaxes are peptide bioregulators created based on natural peptides. An exclusive highly effective technology for isolating low-molecular-weight peptide fractions was developed by the staff of the St. Petersburg Institute of Bioregulation and Gerontology under the guidance of RAS academician V.Kh. Khavinson. This technology formed the basis for a new class of peptide preparations collectively known as "Cytomaxes."

The principle of action of cytomaxes is based on tissue specificity: a peptide complex isolated from a specific organ acts precisely on the cells of the corresponding organ in the human body. Peptides obtained from muscle tissue normalize muscle metabolism; those isolated from the vascular wall affect vascular cells; brain peptides target neurons; liver peptides support hepatocytes, and so on. This selective mechanism of action ensures targeted restoration of the functions of specific organs and systems without affecting other body tissues.

Bioregulators created based on natural peptides help slow down premature aging changes and normalize metabolic processes in the body's cells, initiating their natural renewal process. With regular use, cytomaxes help reduce the risk of oncological diseases and increase the duration of active life.

Cytomaxes are recommended for use after a course of cytogens to consolidate the achieved effect and maintain positive dynamics, as well as a stand-alone program for deep recovery and health maintenance. The positive results of using cytomaxes have been proven by many years of clinical research in leading medical institutions in Russia and abroad. These peptide bioregulators are safe to use, as they are not medicinal products, have no side effects or withdrawal syndrome, allowing them to be used in courses throughout life to maintain health and active longevity.



Usage recommendations for cytomaxes:

1-2 capsules 1-2 times a day during meals. Duration of intake is 1-3 months. It is advisable to conduct a repeat course in 1-3 months.

20/60 capsules of 0.215 g

Cytomaxes

NAME	PURPOSE	APPLICATION AREA	ACTIVE COMPONENT
BONOMARLOT®	Has a selective effect on hematopoietic system cells, normalizes their metabolism, enhances their functional activity	<ul style="list-style-type: none"> • For anemia of various origins; • in the comprehensive treatment of cancer patients; • for inadequate and poor-quality nutrition 	Bone Marrow Peptide Complex (A-20)
BONOTHYRK®	Has a selective effect on parathyroid gland cells, normalizes metabolism in them, and enhances their functional activity	<ul style="list-style-type: none"> • For osteoporosis; • for demineralization of bone tissue; • for urolithiasis; • for muscle weakness caused by parathyroid gland hyperplasia; • for muscle cramps and numbness caused by hypocalcemia 	Parathyroid Gland Peptide Complex (A-21)
VENTFORT®	Has a selective effect on various vascular wall cells, normalizes metabolism in cells, and regulates vascular system functions	<ul style="list-style-type: none"> • For arterial hypertension; • for atherosclerosis of the lower limb vessels; • for obliterating endarteritis; • for atherosclerosis of cerebral vessels and cerebrovascular disorders; • for coronary heart disease; • for varicose veins; • for hemorrhoids; • for angiopathies of various origins; • after myocardial infarction and stroke 	Vascular Peptide Complex (A-3)
VISOLUTEN®	Has a selective effect on various eye tissue cells, normalizes metabolism in them	<ul style="list-style-type: none"> • For retinal angiopathy; • for retinal detachment and degeneration; • for increased eye strain and fatigue; • for glaucoma and cataracts; • for accommodation spasm; • for prolonged computer work; • for driving at night; • for using decorative cosmetics; • for swimming in chlorinated pool water; • for being in polluted or smoky environments 	Eye Tissue Peptide Complex (A-11)



NAME	PURPOSE	APPLICATION AREA	ACTIVE COMPONENT
VLADONIX®	Has a selective effect on various immune system cells, normalizes metabolism in cells, and regulates immune system functions	<ul style="list-style-type: none">• For primary and secondary immunodeficiencies;• for cancer prevention;• after illnesses;• for various chronic intoxications;• during rehabilitation after heart attack and stroke;• after surgeries;• for rejuvenating the body as part of comprehensive programs;	Thymus Peptide Complex (A-6)
GLANDOKORT®	Has a selective effect on adrenal cells, normalizes metabolism in them, and enhances their functional activity	<ul style="list-style-type: none">• For professional or psycho-emotional stress;• for inadequate and poor-quality nutrition;• for hormonal status disorders	Adrenal Peptide Complex (A-17)
GOTRATIX®	Has a selective effect on myocytes (muscle cells), normalizes metabolism in them, and enhances their functional activity	<ul style="list-style-type: none">• For athletes and those engaged in physical labor;• to enhance the reserve capabilities of muscle tissue and reduce muscle fatigue	Muscle Peptide Complex (A-18)
ZHENOLUTEN®	Has a selective effect on ovarian cells, regulates metabolic processes in the ovaries, promotes oocyte maturation, and restores ovarian cyclic activity	<ul style="list-style-type: none">• For ovarian dysfunction;• for menstrual cycle disorders;• for endometriosis;• for female infertility;• for climacteric disorders;• for hormone-dependent diseases of the female reproductive system;• for decreased libido in women	Ovarian Peptide Complex (A-15)
LIBIDON®	Has a selective effect on the cells of prostate tissue, normalizes metabolism in prostate cells	<ul style="list-style-type: none">• For chronic prostatitis;• for prostate adenoma;• for erectile dysfunction;• for decreased ejaculate quality;• for decreased libido in men;• for male infertility	Prostate Peptide Complex (A-16)

Cytomaxes

NAME	PURPOSE	APPLICATION AREA	ACTIVE COMPONENT
PIELOTAX®	Has a selective effect on the cells of kidney tissue, normalizes metabolism in them	<ul style="list-style-type: none"> • For urolithiasis; • for nephroptosis; • for urinary tract anomalies; • for chronic pyelonephritis, cystitis, glomerulonephritis; • for renal failure; • for nephropathy of various origins, including diabetic nephropathy 	Kidney Peptide Complex (A-9)
SIGUMIR®	Has a selective effect on the cells of cartilage and bone tissue, normalizes metabolism in cells and regulates the functions of joints and the spine	<ul style="list-style-type: none"> • For arthrosis and arthritis; • for rheumatism; • for osteochondrosis; • for osteoporosis; • for gout 	Cartilage Peptide Complex (A-4)
STAMAKORT®	Has a selective effect on the cells of the gastric mucosa, normalizes metabolism in them	<ul style="list-style-type: none"> • For gastritis, gastroduodenitis; • for peptic ulcer disease of the stomach and duodenum; • after stomach surgeries, including tumor removal; • for chronic pancreatitis; • for digestive disorders; • for inadequate and poor-quality nutrition; • when using diets aimed at weight loss 	Gastric Mucosa Peptide Complex (A-10)
SUPREFORT®	Has a selective effect on the cells of the pancreas, normalizes metabolism in cells and regulates its functions	<ul style="list-style-type: none"> • For pancreatic function disorders; • to normalize the digestive process; • for chronic pancreatitis; • for pancreatic secretory insufficiency; • to normalize lipid and carbohydrate metabolism; • for type 1 and type 2 diabetes; • for diabetes prevention in individuals over 50 years old; • for inadequate and poor-quality nutrition; • when using diets aimed at weight loss 	Pancreatic Peptide Complex (A-1)



NAME	PURPOSE	APPLICATION AREA	ACTIVE COMPONENT
SVETINORM®	Has a selective effect on liver cells, normalizes metabolism in cells and regulates its functions	<ul style="list-style-type: none">• For metabolic disorders;• for decreased liver function;• for chronic hepatitis of various etiologies;• for chronic intoxications;• for skin diseases;• to normalize lipid metabolism;• for atherosclerosis and obesity;• for inadequate and poor-quality nutrition;• when using diets aimed at weight loss	Liver Peptide Complex (A-7)
TAXOREST®	Has a selective effect on the cells of the bronchial mucosa, normalizes metabolism in them, enhances their functional activity	<ul style="list-style-type: none">• For chronic bronchitis and smoker's bronchitis;• for bronchial asthma;• for chronic obstructive pulmonary disease;• for chronic heart failure;• after diseases of the bronchi and lungs of various origins;	Bronchial Mucosa Peptide Complex (A-19)
TESTOLUTEN®	It has a selective effect on the cells of the male reproductive system, enhances functional activity and increases sperm motility	<ul style="list-style-type: none">• To enhance the functional activity of the male body;• to normalize the male hormonal status;• to enhance libido;• to enhance erectile function;• to normalize sperm motility	Peptide complex of the testes (A-13)
THYREOGEN®	It has a selective effect on thyroid cells, normalizes metabolism in cells and regulates its functions	<ul style="list-style-type: none">• In case of metabolic disorders;• for the prevention of thyroid diseases;• in cases of hypo- and hyperthyroidism;• in autoimmune thyroiditis	Peptide complex of the thyroid gland (A-2)
CERLUTEN®	It has a selective effect on the cells of nervous tissue and the brain, normalizes metabolism in cells and regulates their functions	<ul style="list-style-type: none">• For the normalization of brain activity against the background of atherosclerosis;• during rehabilitation after stroke and TBI;• in cases of memory decline, impaired concentration, and multiple sclerosis;• in Alzheimer's and Parkinson's diseases;• in chronic fatigue syndrome and depression;• in neuralgias and neuritis;• in emotional instability, especially in the elderly	Peptide complex of the brain (A-5)

Cytomaxes

NAME	PURPOSE	APPLICATION AREA	ACTIVE COMPONENT
CHELOHART®	It has a selective effect on myocardial cells, normalizes metabolism in cardiomyocytes	<ul style="list-style-type: none"> • In ischemic heart disease; • in hypertension; • in myocarditis; • in post-infarction atherosclerosis; • in myocardial dystrophy of various origins; • in heart failure; • under increased physical exertion and inadequate nutrition 	Peptide complex of the heart muscle (A-14)
CHITOMUR®	It has a selective effect on the cells of the bladder wall, normalizes metabolism in the cells of the bladder wall, stimulates the muscle tone of the detrusor and sphincter	<ul style="list-style-type: none"> • In chronic cystitis; • in urination disorders caused by prostate diseases; • in urination disorders caused by menopause; • in neurogenic bladder; • in urinary incontinence caused by pelvic organ prolapse in women 	Peptide complex of the bladder (A-12)
ENDOLUTEN®	It has a selective effect on the cells of the neuroendocrine system, normalizes metabolism in the pineal gland cells and melatonin secretion, regulates hormonal exchange, and has a regulatory effect on the pineal gland in particular and the whole body in general	<ul style="list-style-type: none"> • For the normalization of the neuroendocrine system function; • to normalize all cyclic processes in the body; • to synchronize biological clocks; • to normalize the reproductive system and enhance fertility (ability to reproduce); • to delay and smooth out the manifestations of menopause; • for the prevention of oncological diseases; • to boost immunity; • for the prevention of premature aging and to increase life expectancy 	Peptide complex of the pineal gland (A-8)

CELLULAR REJUVENATION OF A NEW LEVEL

INNOVATIVE
ANTIOXIDANT COMPLEX
WITH **NAD+**
AND PINEAL AND LIVER
PEPTIDES

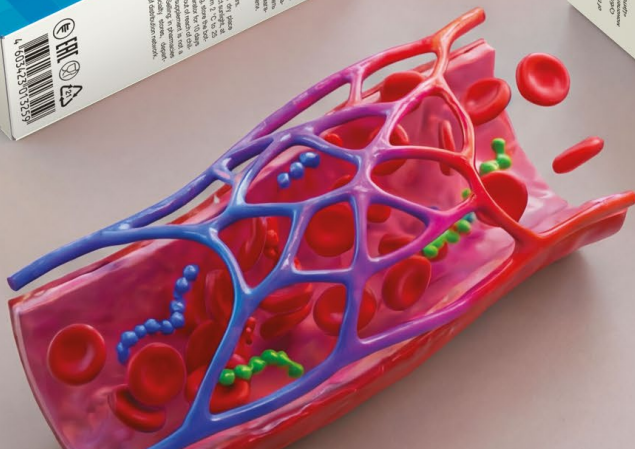
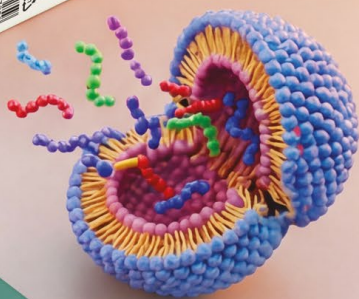
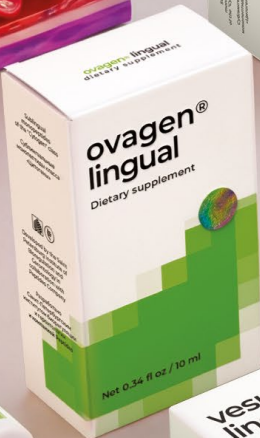
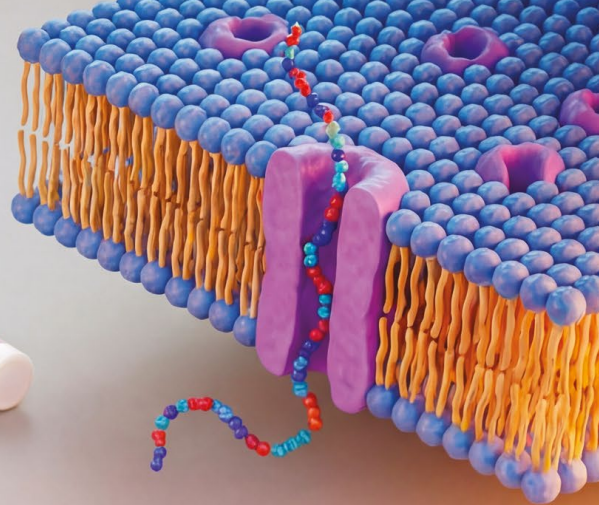
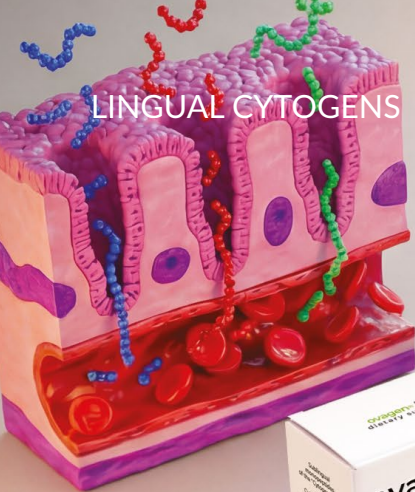
ACTIVATION OF CELLULAR
REGENERATION AND BODY
DETOXIFICATION.

REVILAB MAX — AN ADVANCED
SOLUTION FOR MAINTAINING YOUTH
AND ENERGY AT THE CELLULAR LEVEL.



COMING SOON

LINGUAL CYTOGENS





Lingual Cytogens

Bioregulators based on synthesized peptides in sublingual form



Recommendations for using lingual cytomaxes:

Take sublingually 10-15 minutes before meals, 5-6 drops 3-4 times a day. Duration of intake – 1 month. A repeat course is recommended in 3-6 months.

10 ml

Classic peptide preparations in the "Cytogens" class capsules have already established themselves as effective means of peptide bioregulation. Sublingual administration has several advantages: there is no time loss for partial hydrolysis of the preparations in the gastrointestinal tract, and the preparation is instantly captured by the sublingual venous network.

In sublingual mono-peptides, the daily dose is reduced by half compared to encapsulated mono-peptides of the "Cytogens" class, with the dose of cytogens in the sublingual form being 100 mcg per 1 ml. Additionally, the new generation of preparations has a significant advantage – the ability to more accurately select an individual dose depending on the specific patient's needs and clinical situation.







The sublingual form ensures rapid absorption of active components through the oral mucosa, bypassing the primary metabolism in the liver. This allows for higher bioavailability of peptides and accelerates the onset of effect. The bioregulatory action begins within minutes after application, which is especially im-

portant for the quick correction of functional disorders.

The convenient liquid form with a dispenser allows for precise measurement of the required amount of the product and easy adjustment of the dosage during the course of use. Lingual cytogens can be used independently or in combination with other forms of peptide bioregulators to achieve a synergistic effect and enhance the therapeutic impact on the body.

The absence of the need to take the product with water and the possibility of use in any conditions make the lingual form extremely convenient for patients of any age and especially relevant for people with difficulty swallowing or gastrointestinal tract disorders.

LINGUAL CYTOGENS

NAME	PURPOSE	APPLICATION AREA	ACTIVE COMPONENT
VESUGEN® LINGUAL 	Contributes to the normalization of the functional state of blood vessels	<ul style="list-style-type: none"> • For varicose veins; • for arterial hypertension; • for trophic ulcers; • for thrombophlebitis; • for vascular atherosclerosis; • for angiopathies 	Vascular peptide complex (AC-2)
CRYSTAGEN® LINGUAL 	Contributes to the normalization of the functional state of the immune system	<ul style="list-style-type: none"> • For immunodeficiencies; • after past illnesses; • for various chronic intoxications; • during rehabilitation after heart attack and stroke; • after surgeries; • for the prevention of oncological diseases 	Thymus peptide complex (AC-6)
CARTALAX® LINGUAL 	Contributes to the normalization of cartilage tissue function and musculoskeletal system	<ul style="list-style-type: none"> • For arthrosis and arthritis; • for rheumatism; • for osteochondrosis; • for osteoporosis; • for gout 	Cartilage peptide complex (AC-4)
OVAGEN® LINGUAL 	Contributes to the normalization of liver and gastrointestinal tract function	<ul style="list-style-type: none"> • For atherosclerosis and obesity; • for cholecystitis; • for liver cirrhosis; • for chronic intoxications; • for metabolic disorders; • for reduced liver function 	Liver peptide complex (AC-3)
PINEALON® LINGUAL 	Contributes to the normalization of the functional activity of brain cells	<ul style="list-style-type: none"> • During rehabilitation after stroke; • for memory decline and impaired concentration; • for Alzheimer's and Parkinson's diseases; • for multiple sclerosis; • for chronic fatigue syndrome; • for depression 	Brain peptide complex (AC-5)
CHONLUTEN® LINGUAL 	Contributes to the normalization of bronchopulmonary system and gastric mucosa function	<ul style="list-style-type: none"> • For chronic bronchitis; • for pulmonary emphysema; • for bronchial asthma; • for respiratory allergies 	Bronchopulmonary tree peptide complex (AC-7)



Visulingual®

10 ml

The modern pace of life with constant digital loads, age-related changes, and adverse environmental factors pose a serious threat to eye health. Visulingual® is an innovative solution for comprehensive protection and restoration of visual function based on synthesized peptides. The sublingual form ensures maximum bioavailability of active components and rapid onset of effect.

The unique formula contains 4 peptide complexes; each consisting of 3 amino acids and providing targeted bioregulatory action.

Peptide complex AC-2 normalizes the functional state of blood vessels, improving microcirculation and blood supply to the organ of vision.

Peptide complex AC-5 restores the functional state of brain cells, supporting the central mechanisms of visual perception.

Peptide complex AC-6 optimizes the functional state of immune system cells, providing protection against inflammatory processes.

Peptide complex AC-7 exhibits retinoprotective action, restoring the functional state of retinal cells. Thanks to its biological activity concerning mucous membranes, AC-7 in Visulingual® specifically targets retinal tissues.

The medication is recommended for the comprehensive restoration of visual organ functions after diseases of various origins, including degenerative-dystrophic processes, in pathological conditions leading to vision impairment,

under the influence of extreme environmental factors (professional workloads, prolonged use of digital devices), inadequate nutrition, as well as for the prevention of age-related changes in the visual system.

Active components: vascular peptide (AC-2), cerebral cortex peptide (AC-5), thymus peptide (AC-6), bronchopulmonary tree peptide (AC-7).

Usage recommendations: adults should take sublingually 5-6 drops (0.25-0.35 ml) 10-15 minutes before meals, 3-4 times a day. Duration of intake is 1 month. A repeat course is recommended in 3-6 months.

LINGUAL CYTOMAXES



Lingual Cytomaxes

Bioregulators based on natural peptides in sublingual form

The lingual line of peptide bioregulators includes "Cytomaxes" – natural polypeptide complexes. The concentration of the active substance in the lingual form differs from that in encapsulated products. This decision is due to the new form of bioregulator application, as it provides higher bioavailability of the product and faster action on the body.

Sublingual intake of natural peptide complexes has several advantages over the encapsulated form. Active components are absorbed directly through the oral mucosa into the sublingual venous network, bypassing the gastrointestinal tract and the primary metabolism system in the liver. This eliminates the loss of active substances during hydrolysis and ensures a rapid onset of the bioregulatory effect – within minutes after application. Such speed is especially important when there is a need for prompt correction of functional disorders and support of the body under increased stress conditions.

The convenient liquid form with a dispenser allows for precise measurement of the required amount of the product and easy regulation of the dose depending on the individual's reaction and needs. Lingual Cytomaxes, like the classic encapsulated ones, are intended for specific systems of the human body or

individual organs. By exhibiting biological activity towards certain tissues, lingual Cytomaxes help ensure the functional activity of an organ at a level that corresponds to a person's age and overall condition.

Lingual Cytomaxes can be used independently or in combination with other forms of peptide bioregulators to achieve a synergistic effect and enhance the therapeutic impact on the body. The absence of the need to take the product with water and the possibility of use in any conditions make the lingual form extremely convenient for people of any age and especially relevant for those with difficulty swallowing or gastrointestinal tract disorders.



take sublingually 10-15 minutes before meals, 5-6 drops 3-4 times a day. Duration of intake – 1 month. A repeat course is recommended in 3-6 months.

10 ml

LINGUAL CYTOMAXES

NAME	PURPOSE	APPLICATION AREA	ACTIVE COMPONENT
BONOMARLOT® LINGUAL	Has a selective effect on hematopoietic system cells, normalizes their metabolism, and enhances their functional activity	<ul style="list-style-type: none"> • For anemia of various origins; • in the comprehensive treatment of cancer patients; • for inadequate and poor-quality nutrition 	Bone marrow peptide complex (A-20)
BONOTHYRK® LINGUAL	Has a selective effect on parathyroid gland cells, normalizes their metabolism, and enhances their functional activity	<ul style="list-style-type: none"> • For osteoporosis; • for bone tissue demineralization; • for urolithiasis; • for muscle weakness caused by parathyroid gland hyperplasia; • for muscle cramps, muscle numbness caused by hypocalcemia 	Parathyroid gland peptide complex (A-21)
VENTFORT® LINGUAL	Has a selective effect on various vascular wall cells, normalizes metabolism in cells, and regulates vascular system functions	<ul style="list-style-type: none"> • For arterial hypertension; • for atherosclerosis of the lower extremities; • for obliterating endarteritis; • for atherosclerosis of cerebral vessels and cerebrovascular disorders; • for coronary heart disease; • for varicose veins; • for hemorrhoids; • for angiopathies of various origins; • after myocardial infarction and stroke 	Vascular peptide complex (A-3)
VISOLUTEN® LINGUAL	Has a selective effect on various eye tissue cells, normalizes their metabolism	<ul style="list-style-type: none"> • For retinal angiopathy; • for retinal detachment and degeneration; • for increased eye strain and fatigue; • for glaucoma and cataracts; • for accommodation spasm; • for prolonged computer work; • for driving at night; • for using decorative cosmetics; • for swimming in chlorinated pool water; • for being in polluted or smoky environments 	Eye tissue peptide complex (A-11)



NAME	PURPOSE	APPLICATION AREA	ACTIVE COMPONENT
VLADONIX® LINGUAL	Has a selective effect on various immune system cells, normalizes metabolism in cells, and regulates immune system functions	<ul style="list-style-type: none">• For primary and secondary immunodeficiencies;• for cancer prevention;• after illnesses;• for various chronic intoxications;• during the rehabilitation period after a heart attack and stroke;• after surgeries;• for rejuvenating the body as part of comprehensive programs	Thymus Peptide Complex (A-6)
GLANDOKORT® LINGUAL	Has a selective effect on adrenal cells, normalizes metabolism within them, and enhances their functional activity	<ul style="list-style-type: none">• In cases of professional or psycho-emotional stress;• inadequate and poor-quality nutrition;• hormonal status disorders	Adrenal Peptide Complex (A-17)
GOTRATIX® LINGUAL	Has a selective effect on myocytes (muscle cells), normalizes metabolism within them, and enhances their functional activity	<ul style="list-style-type: none">• For athletes and individuals engaged in physical labor;• to enhance the reserve capabilities of muscle tissue and reduce muscle fatigue	Muscle Peptide Complex (A-18)
ZHENOLUTEN® LINGUAL	Has a selective effect on ovarian cells, regulates metabolic processes in the ovaries, promotes egg maturation, and restores ovarian cyclic activity	<ul style="list-style-type: none">• In cases of ovarian dysfunction;• menstrual cycle disorders;• endometriosis;• female infertility;• climacteric disorders;• hormone-dependent diseases of the female reproductive system;• reduced libido in women	Ovarian Peptide Complex (A-15)
LIBIDON® LINGUAL	Has a selective effect on prostate tissue cells, normalizes metabolism in prostate cells	<ul style="list-style-type: none">• In cases of chronic prostatitis;• prostate adenoma;• erectile dysfunction;• reduced ejaculate quality;• reduced libido in men;• male infertility	Prostate Peptide Complex (A-16)

LINGUAL CYTOMAXES

NAME	PURPOSE	APPLICATION AREA	ACTIVE COMPONENT
PIELOTAX® LINGUAL	Has a selective effect on kidney tissue cells, normalizes metabolism within them	<ul style="list-style-type: none"> • In cases of urolithiasis; • nephroptosis; • urinary tract anomalies; • chronic pyelonephritis, cystitis, glomerulonephritis; • renal failure; • nephropathy of various origins, including diabetic nephropathy 	Kidney Peptide Complex (A-9)
SIGUMIR® LINGUAL	Has a selective effect on cartilage and bone tissue cells, normalizes metabolism in cells, and regulates joint and spine functions	<ul style="list-style-type: none"> • In cases of arthrosis and arthritis; • rheumatism; • osteochondrosis; • osteoporosis; • gout 	Cartilage Peptide Complex (A-4)
STAMAKORT® LINGUAL	Has a selective effect on stomach mucosa cells, normalizes metabolism within them	<ul style="list-style-type: none"> • In cases of gastritis, gastroduodenitis; • peptic ulcer disease of the stomach and duodenum; • after stomach surgeries, including tumor removal; • chronic pancreatitis; • digestive disorders; • inadequate and poor-quality nutrition; • when using diets aimed at weight loss 	Stomach Mucosa Peptide Complex (A-10)
SUPREFORT® LINGUAL	Has a selective effect on pancreatic cells, normalizes metabolism in cells, and regulates its functions	<ul style="list-style-type: none"> • In cases of pancreatic function disorders; • to normalize the digestive process; • chronic pancreatitis; • pancreatic secretory insufficiency; • to normalize lipid and carbohydrate metabolism; • for type 1 and type 2 diabetes; • for the prevention of diabetes in individuals over 50 years old; • for inadequate and poor-quality nutrition; • when using diets aimed at weight loss 	Pancreatic peptide complex (A-1)



NAME	PURPOSE	APPLICATION AREA	ACTIVE COMPONENT
SVETINORM® LINGUAL	Has a selective effect on liver cells, normalizes metabolism within the cells, and regulates its functions	<ul style="list-style-type: none">• In case of metabolic disorders;• for reduced liver function;• for chronic hepatitis of various etiologies;• for chronic intoxications;• for skin diseases;• to normalize lipid metabolism in atherosclerosis and obesity;• for inadequate and poor-quality nutrition;• when using diets aimed at weight loss	Liver peptide complex (A-7)
TAXOREST® LINGUAL	Has a selective effect on bronchial mucosa cells, normalizes metabolism within them, and enhances their functional activity	<ul style="list-style-type: none">• For chronic bronchitis and smoker's bronchitis;• for bronchial asthma;• for chronic obstructive pulmonary disease;• for chronic heart failure;• after diseases of the bronchi and lungs of various origins	Peptide complex of the bronchial mucosa (A-19)
TESTOLUTEN® LINGUAL	Has a selective effect on male reproductive system cells, enhances functional activity and increases sperm motility	<ul style="list-style-type: none">• To enhance the functional activity of the male body;• to normalize male hormonal status;• to enhance libido;• to enhance erectile function;• to normalize sperm motility	Peptide complex of testes (A-13)
THYREOGEN® LINGUAL	Has a selective effect on thyroid cells, normalizes metabolism within the cells, and regulates its functions	<ul style="list-style-type: none">• In case of metabolic disorders;• for the prevention of thyroid diseases;• for hypo- and hyperthyroidism;• for autoimmune thyroiditis	Thyroid peptide complex (A-2)
CERLUTEN® LINGUAL	Has a selective effect on nerve tissue and brain cells, normalizes metabolism within the cells, and regulates their functions	<ul style="list-style-type: none">• To normalize brain activity in the context of atherosclerosis;• for rehabilitation after stroke and traumatic brain injury;• for memory decline, attention deficit, and multiple sclerosis;• for Alzheimer's and Parkinson's diseases;• for chronic fatigue syndrome and depression;• for neuralgias and neuritis;• for emotional instability, especially in the elderly	Peptide complex of the brain (A-5)

LINGUAL CYTOMAXES

NAME	PURPOSE	APPLICATION AREA	ACTIVE COMPONENT
CHELOHART® LINGUAL	Has a selective effect on myocardial cells, normalizes metabolism in cardiomyocytes	<ul style="list-style-type: none"> • For coronary heart disease; • for hypertension; • for myocarditis; • for post-infarction atherosclerosis; • for myocardial dystrophy of various origins; • for heart failure; • for increased physical exertion and inadequate nutrition 	Heart muscle peptide complex (A-14)
CHITOMUR® LINGUAL	Has a selective effect on bladder wall cells, normalizes metabolism within bladder wall cells, stimulates muscle tone of the detrusor and sphincter	<ul style="list-style-type: none"> • For chronic cystitis; • for urination disorders caused by prostate diseases; • for urination disorders caused by menopause; • for spinal bladder; • for urinary incontinence caused by pelvic organ prolapse in women 	Bladder Peptide Complex (A-12)
ENDOLUTEN® LINGUAL	It has a selective effect on the cells of the neuroendocrine system, normalizes metabolism in pineal gland cells and melatonin secretion, regulates hormonal exchange, and exerts a regulatory effect on the pineal gland in particular and the entire body in general.	<ul style="list-style-type: none"> • For normalizing the function of the neuroendocrine system; • for normalizing all cyclic processes in the body; • for synchronizing biological clocks; • for normalizing the reproductive system and enhancing fertility (ability to reproduce); • for delaying and smoothing the manifestations of menopause; • for cancer prevention; • for boosting immunity; • for preventing premature aging and increasing lifespan 	Pineal Peptide Complex (A-8)



Getruflin® — effective prevention of helminthiasis

A unique product with a natural composition and a fundamentally new formula. Getruflin® is released in the form of truffles and is an adjunct to the prevention and treatment of helminthic, bacterial and fungal infections.

Getruflin® ensures smooth functioning of the intestine, normalization of its microflora, support of adequate absorption of nutrients.

Preventive preparations

For health, beauty, and active life

Modern preventive preparations significantly improve the quality of life and slow down the aging processes of the body at the cellular and systemic levels. The line of non-peptide parapharmaceuticals Peptides® is created based on the latest scientific developments in anti-aging medicine and serves as a supplement to the basic revitalization program based on peptide bioregulators.

Each preparation developed by Peptides® is a balanced complex of biologically active substances of plant origin, vitamins, minerals, and amino acids, aimed at specific organs and systems of the body. This targeted approach ensures maximum efficiency in solving specific tasks – from supporting the cardiovas-

cular system to normalizing carbohydrate metabolism.

The comprehensive use of the presented products contributes to the normalization of metabolic processes, the restoration of lost functions of organs and systems of the body. An important advantage is the absence of destructive side effects, which creates a reliable foundation for preserving youth, beauty, and health.

In combination with peptide bioregulators, this group of parapharmaceuticals provides a synergistic effect, significantly enhancing the effectiveness of therapy. The risk of malignant neoplasms and age-related diseases is reduced. This comprehensive approach allows for an

impact on the body at different levels – from molecular-cellular to systemic, enhancing the overall health and rejuvenating effect.

The line's preparations have undergone clinical testing and are recommended for long-term use as part of active longevity programs.

**ENHANCED
AND UPDATED
FORMULA**



Pangluin® forte support for the body in diabetes

An innovative bioregulator for supporting the pancreas and carbohydrate metabolism in diabetes. The formula is based on the synergistic action of the peptide complex AA-11 (pankragen) and carefully selected plant extracts.

Pangluin® forte is used in type 1 and type 2 diabetes, promoting increased performance and resilience to stress in pancreatic β -cells. The medication prevents the development of diabetes-related vascular lesions and has a moderate hypoglycemic effect.

The peptide complex AA-11 (Lys-Glu-Asp-Trp) is a pancreatic tetrapeptide developed at the St. Petersburg Institute of Bioregulation and Gerontology. Experimental studies have shown a significant 35% reduction in blood glucose levels. Clinical trials have confirmed its effectiveness in patients with type 1 and type 2 diabetes.

The plant complex enhances the action of peptides: rosehip positively affects carbohydrate metabolism and vitamins the body, licorice provides hepatoprotective protection, bilberry improves retinal blood supply and prevents diabetic vision complications, gotu kola supports microcirculation and tissue regeneration.

Recommended for lipid and carbohydrate metabolism disorders, type 1 and type 2 diabetes, glucose intolerance, for the prevention of diabetic angiopathy of the leg vessels, in blood coagulation disorders, and capillary fragility.

Active components: peptide complex AA-11 (pancreas), concentrated rosehip juice, natural plant extracts: rosehip, licorice, St. John's wort, calamus, nettle, calendula, bilberry, gotu kola, grape skin, yarrow, centaury.

Method of application: take 1 teaspoon (5 ml) once a day during meals, either on its own or as an addition to other beverages. Shake before use. Duration of intake is 1 month. Repeat courses are possible 3-4 times a year.



120 ml

 CONTAINS
PEPTIDES

Comprehensive prevention



Imusil® immunoprotector


A natural immune restorer based on live lacto- and bifidobacteria and fragments of their cell walls combined with echinacea and ascorbic acid. Activates all components of immune defense, reduces the risk of malignant tumors.

Recommended for dysbiosis, frequent colds, allergic reactions. Indicated for chronic diseases of the gastrointestinal tract, lungs, heart, liver, and nervous system.

Used for regular exposure to harmful substances at work, antibiotic intake, obesity, high physical exertion. Used for cancer prevention.

Active components: probiotic starter culture of bifido- and lactobacilli, echinacea extract, ascorbic acid.

Usage recommendations: adults take 1 capsule 2 times a day with meals for 2-3 weeks. The course can be repeated after 2-3 weeks.

 20 capsules of 0.31 g

Zinsil-T® source of zinc


A complex preparation based on zinc, glycine, and pyridoxine. Effectively prevents accelerated aging processes, corrects the function of numerous enzymes and hormones, restores impaired immune and antioxidant status. Proven means of cancer prevention.

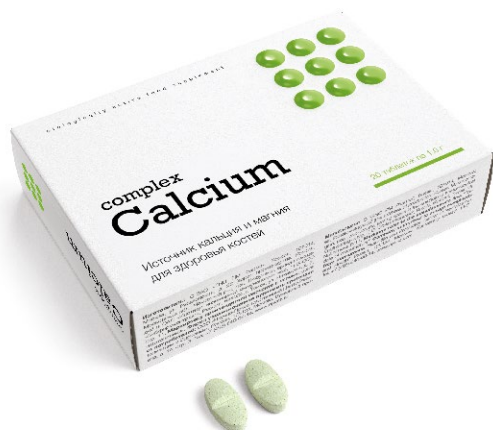
Recommended for supporting immunity and enhancing antioxidant status during recovery from strokes and traumatic brain injuries. Indicated for stress and insomnia, allergic reactions and skin diseases, carbohydrate and lipid metabolism disorders.

Used for diabetes, atherosclerosis, vegetative-vascular dystonia, hypertension, for preventing premature aging.

Active components: glycine, zinc citrate, vitamin B₆.

Usage recommendations: adults take 1 tablet 2 times a day, chewing during meals. Duration of intake is 1 month. If necessary, the course can be repeated.

 20 tablets of 1.0 g



Calcium Complex®

source of calcium and magnesium

A complex preparation for prolonging active longevity based on calcium, magnesium, vitamins A, D, and E.

Recommended for the prevention of osteoporosis and cancer. Indicated for cerebral insufficiency, hypertension, and ischemic heart disease, blood coagulation disorders, osteoporosis, depression, and insomnia.

Used for memory disorders, dizziness and headaches, tinnitus, rheumatoid polyarthritis, osteochondrosis. Effective for mental and physical exertion, fractures, eye diseases.

Used for hepatitis, skin diseases, diabetes, menopause, for preventing premature aging.

Active components: calcium citrate, calcium carbonate, magnesium citrate, magnesium carbonate, vitamins A, D, and E.

Usage recommendations: adults take 1 tablet 2 times a day with meals. Duration of intake is 1 month. If necessary, intake can be repeated.

● 20 tablets of 1.0 g

Olecap®

angio-restorer

A preparation based on polyunsaturated fatty acids of the omega-3, omega-6 class, tocopherols, and tocotrienols. Effectively inhibits the growth of atherosclerotic plaques, reduces blood cholesterol levels, and has pronounced antioxidant properties.

Recommended for lipid metabolism disorders, high cholesterol levels, atherosclerosis, hypertension, and ischemic heart disease. Indicated for the prevention of heart attack and stroke, in cases of diabetes, allergic reactions. Used during the recovery period after chemoradiotherapy.

Active components: cold-water salmon oil, flaxseed oil, vitamins A and E.

Usage recommendations: 1 capsule 2-3 times a day with meals. Duration of intake is 4-6 weeks. If necessary, the course can be repeated.

● 30 capsules of 840 mg

Comprehensive prevention



Regenart® joint and liver protection


A comprehensive preparation for supporting joint and liver function.

An important task of the preparation is to restore the functional activity of the liver. Improving liver function enhances the regenerative capacity of cartilage tissue and joint surfaces, improving joint mobility.

Recommended for arthrosis, arthritis, osteochondrosis, chronic liver diseases, and bile duct disorders. Prevents the development of liver cirrhosis.

Active components: dandelion root extract, chondroitin sulfate, artichoke extract, dihydroquercetin.

Usage recommendations: 1 capsule 2 times a day with meals. Duration of intake is 1 month. If necessary, the course can be repeated.

 20 capsules of 0.30 g


Renefort® kidney protection

A multicomponent preparation for maintaining optimal urinary system function. It has anti-inflammatory, antioxidant, moderate antispasmodic, and diuretic effects. Increases the solubility of urinary stones composed of uric and oxalic acid salts. Slows the progression of renal failure.

Recommended for chronic pyelonephritis and glomerulonephritis, cystitis, nephroptosis, urolithiasis, urinary tract developmental anomalies, and chronic renal failure.

Active components: magnesium oxide, lingonberry leaf, horsetail herb, rosehip extract, rosemary extract, hesperidin, vitamin C, superoxide dismutase, hibiscus extract, vitamin E, beta-carotene, dihydroquercetin, coenzyme Q10.

Usage recommendations: 1 capsule 2 times a day with meals. Duration of intake is 4-6 weeks. If necessary, the course can be repeated.

 20 capsules of 0.41 g



Ardiliv®

liver restoration


Stimulates liver cell regeneration, activates detoxification processes, and has an antioxidant effect, as well as enhances liver cell regeneration after viral and toxic damage.

Prevents the development of liver cirrhosis, can normalize its function, and achieve stable positive results in patients with various forms of hepatitis.

Recommended for chronic intoxications, viral, toxic, alcoholic, and drug-induced hepatitis, reduced detoxification and protein-forming liver function, fatty hepatosis, and cirrhosis, for preventing the development of liver adenocarcinoma.

Active components: extracts: red grape leaf, strawberry, artichoke; dihydroquercetin, resveratrol.

Usage recommendations: 1-2 capsules 2 times a day with meals. Duration of intake is 1 month. Repeat courses are possible 3-4 times a year.

 30 capsules of 0.30 g

Gelmigon®


antiparasitic preparation

A non-peptide bioregulator based on plant components, with a wide spectrum of preventive antiparasitic action. Its effectiveness is due to creating a concentration of substances in the body that are intolerable to parasites but safe for humans. The active components enhance the body's resistance and are completely safe for health.

Recommended for the prevention of parasitic invasions of various etiologies, in allergic reactions caused by helminthiasis, chronic fatigue syndrome, for the prevention of gastrointestinal tract dysfunctions due to helminth invasion.

Active components: extract of emblica (amla) fruits, plantain leaves, horsetail herb, clove, cinnamon, garlic, ginger root, buckthorn bark, anise seeds, extracts: licorice root, yarrow herb, walnut leaves, artichoke fruits, fenugreek seeds.

Usage recommendations: take 1 capsule 2-3 times a day during meals. Duration of intake is 1 month. Repeat courses are possible 3-4 times a year.

 30 capsules of 0.40 g

Comprehensive prevention



Panaxod®

protection of the stomach and duodenum

A preparation based on the enzyme superoxide dismutase (SOD), which improves the functional state and accelerates recovery during standard therapy of gastric and duodenal ulcer disease. It helps to relieve pain syndrome, reduces the healing time of ulcerative defects, and decreases the severity of endoscopic and histological manifestations of inflammatory reactions in the mucous membrane.

Recommended for gastrointestinal tract diseases accompanied by inflammatory syndrome. Used as part of standard therapy for gastric and duodenal ulcer disease, gastritis. Effective for the eradication of Helicobacter infection.

Active components: superoxide dismutase, ginseng biomass, rutin, vitamin PP.

Usage recommendations: 1 capsule 3-4 times a day, in the morning and afternoon, during meals. Course duration is 2-3 weeks.

60 capsules of 0.17 g



Revimite®

source of vitamins and microelements

A nutraceutical that replenishes the deficiency of microelements and vitamins. Compensates for the lack of B vitamins and iron (Fe), and has immunomodulatory and antioxidant effects.

Recommended for supporting the immune system, reducing antioxidant status, metabolic disorders, atherosclerosis, diabetes, anemia of various origins. Indicated for dieting and fasting, as part of comprehensive weight management programs, and during increased physical exertion.

Active components: concentrated pomegranate juice, soy lecithin, pectin, oat herb extract, echinacea purpurea extract, extracts: green tea, grape seeds, soy isoflavones, yeast; dried ginger, Brazilian ginseng, iron pyrophosphate, clove, vitamins B₁, B₃, B₆.

Usage recommendations: 1 teaspoon (10 grams) on its own or with any product. Can be spread on a slice of bread.

100 g



Trezvon®

alleviation of intoxication symptoms

A non-peptide bioregulator for eliminating intoxication of various origins, including alcohol. It has anti-inflammatory, hypolipidemic, hepatoprotective, and choleric effects. Exhibits antitumor, antiviral, and bactericidal activity.

The components have neuroprotective, anti-stress, and sedative effects, improve metabolic processes in brain tissues, restore sleep, and increase neuron resistance to intoxication.

Recommended for intoxications of various origins, including alcohol, for withdrawal syndrome, to support liver function and normalize metabolism.

Active components: birch leaf extract, glycine, lemon balm herb, cinnamon, choline bitartrate, extracts: burdock root, artichoke fruit, thyme herb; bay leaf, dihydroquercetin, vitamin B₆.

Usage recommendations: 1 tablet 1-2 times a day during meals. If necessary, intake can be increased to 4 tablets a day.

10 tablets of 0.71 g



Adestab®

support for vessels and heart

A mild hypotensive and angioprotective drug for the prevention of heart attack and stroke. It improves metabolism in the vascular wall and maintains its structural integrity. Course use allows st

Recommended for stabilizing blood pressure, preventing thrombosis, reducing hot flashes during menopause, improving myocardial trophism, and reducing weather sensitivity. abilizing blood pressure and reducing the risk of vascular complications.

Active components: potassium chloride, magnesium citrate, chokeberry fruits, lemon balm herb, calendula flowers, hop cones, fennel seeds, extracts: hawthorn fruits, horsetail herb.

Usage recommendations: take 2 tablets twice a day with meals. Duration of intake is 4-6 weeks. Repeat courses are possible throughout the year.

Adestab®

Comprehensive prevention



Actiman®

support for the male body

A comprehensive preparation positively affecting the function of the male genitourinary system. Improves metabolic processes in the prostate and testes, normalizes sperm production processes, and restores their motility in ejaculate.

Reduces congestion and inflammatory phenomena in the pelvic organs, improves blood flow to the cavernous bodies of the penis, restores potency. Slows the growth of prostate adenoma.

Recommended for erectile dysfunction and chronic congestive prostatitis, prostate adenoma. Indicated for decreased libido, premature ejaculation, and reduced ejaculate quality.

Active components: L-arginine, L-carnitine, acetyl-L-carnitine, extracts: saw palmetto (serenoa), cactus flower (opuntia), pumpkin seeds, pygeum bark, muira puama, epimedium.

Usage recommendations: 1 capsule twice a day with meals. Duration of intake is one month. Repeat courses are possible 3-4 times a year.

 30 capsules of 0.39 g



Femalin®

support for the female body

A preparation that normalizes the function of the female reproductive system. Helps address hormonal, sexual, and psychosomatic issues, positively influences the hormonal status of the female body.

Recommended for menstrual cycle disorders and painful menstruation, to enhance sensitivity of the sexual pathways. Indicated for anorgasmia, ovarian dysfunction, climacteric period, decreased libido, and neuroendocrine balance disorders.

Used for sleep disorders, neuroses, depression, to normalize blood pressure and heart function. Used in programs for weight correction, blood sugar levels, and mineral metabolism during the climacteric period.

Active components: L-arginine, dioscorea extract, muira puama extract, yohimbe bark extract, and resveratrol.

Usage recommendations: 1 capsule a day with meals. Duration of intake is 1 month. Repeat courses are possible 3-4 times a year.

 30 capsules of 0.43 g



Complex 3D®

antioxidant and detoxifier


A comprehensive preparation based on detoxifiers and antioxidants. Thanks to the presence of the tripeptide glutathione, SOD, and catalase, dihydroquercetin is capable of addressing several tasks at once: slowing down aging at the cellular level, preventing intoxication caused by glycation processes, and providing regenerative, anti-inflammatory, immuno-, angio-, and hepatoprotective effects.

Reduces the level of chronic inflammation in connective tissue and vascular walls.

Recommended for varicose veins, prevention of atherosclerosis and hypertension, liver dysfunction, chronic intoxications, chronic inflammation syndrome, oxidative stress, cardiovascular diseases, and for the prevention of accelerated aging.

Active components: selenium-enriched brewer's yeast, L-cysteine, dihydroquercetin, catalase, vitamin E, barley sprout extract (contains superoxide dismutase), vitamin A, glutathione.

Usage recommendations: adults take 1 capsule a day with meals. Duration of intake is 4-6 weeks. If necessary, the course can be repeated. Repeat courses are possible throughout the year.

 30 capsules of 0.4 g

Complex 3R®

antioxidant protection of the body

A multicomponent bioregulator includes three powerful antioxidants, membrane stabilizers, and geroprotectors. The geroprotector addresses multiple tasks due to the presence of highly effective antioxidants: dihydroquercetin, resveratrol, and coenzyme Q10. The complex action of the components protects cells from oxidative stress and slows down aging processes at the cellular level.

Recommended for immunodeficiencies of various origins, frequent viral diseases, and lipid metabolism disorders. Indicated as an antioxidant, for the prevention of oncopathologies and cardiovascular diseases, during increased physical and mental stress.

Active components: antioxidant complex: coenzyme Q10, resveratrol, and dihydroquercetin.

Usage recommendations: take 1 tablet 1-2 times a day with meals. Duration of intake is 4-6 weeks. Repeat courses may be taken throughout the year.

 30 tablets of 0.25 g

Comprehensive prevention



Protoston® men's health protection



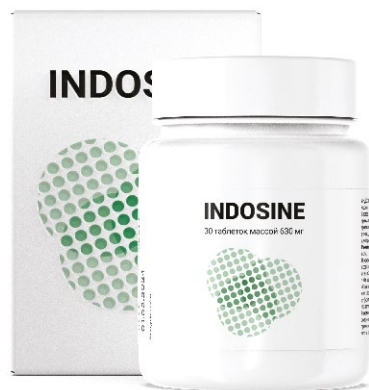
A multi-component preparation with peptides for normalizing the functions of the male reproductive system. The combination of a dipeptide that stimulates the functions of the male reproductive system and active components — extracts of deer antlers, hemolen, pygeum bark, zinc, and selenium — helps prevent aging and effectively corrects the functioning of the male genitourinary system.

Recommended for erectile dysfunction, moderate increase in testosterone levels, prostate adenoma, chronic congestive prostatitis, premature ejaculation, decreased libido, and reproductive function disorders. Indicated for supporting the immune system, enhancing mental and physical activity.

Active components: male reproductive system peptide complex (AA-21), L-arginine, selenium-enriched brewer's yeast, pygeum bark extract, hemolen, pantel, zinc, epimedium extract.

Usage recommendations: 1 capsule a day with meals. Duration of intake is 4-6 weeks. If necessary, the course can be repeated. Repeat courses are possible throughout the year.

30 capsules of 0.3 g



Indosine® cancer prevention

A highly effective drug that reduces the risk of cancer development. Contains a complex of coenzyme preparations, membrane stabilizers, immunomodulators, and antioxidants. Restores the body's antioxidant status, supports the immune system, removes toxins from cells, and protects the body from the development of oncological diseases.

Recommended for increased risk of cancer, presence of precancerous conditions, and as part of comprehensive cancer treatment. Indicated for recurrent neoplasms, chemoradiotherapy, antibiotic therapy, rehabilitation after surgical interventions, and allergies.

Active components: extract of milk-white iris, catalase, superoxide dismutase, coenzyme Q10, broccoli extract, indole-3-carbinol.

Usage recommendations: take 1 tablet once a day with meals. Duration of intake is 4-6 weeks. Repeat courses may be taken throughout the year if necessary. Do not break or crush tablets before use.

30 tablets of 0.63 g



Chondromix® chondroprotector

Affects the process of cartilage tissue restoration. Prevents the development of degenerative-dystrophic changes in joints and the spine, increases the synthesis of hyaluronic acid—the main component of synovial fluid, ensuring the sliding of joint surfaces. Normalizes the composition of joint lubrication, helps reduce pain syndrome and inflammatory processes in the joints, and eliminates joint crunching and stiffness.

Recommended for osteoarthritis, arthritis, bursitis, rheumatism, spinal osteochondrosis, and gout.

Active components: chondroitin sulfate, glucosamine, methylsulfonylmethane, grape seed extract, catalase, boswellia serrata extract, superoxide dismutase.

Usage recommendations: take 1 tablet twice a day with meals. Duration of intake is 4-6 weeks. Intake can be repeated throughout the year if necessary. Do not break or crush tablets before use.

30 tablets of 0.41 g

Chondromix® cream-balm anti-inflammatory, analgesic remedy for joints and muscles



Effectively relieves pain syndrome, improves local blood circulation, joint nutrition, and the trophism of periarticular tissues.

The penetration of active components directly to the inflamed area relieves spasms of the periarticular muscles by activating pain receptors. It has a relaxing effect, restores blood circulation, reduces swelling, and returns mobility and ease to the joints.

Recommended for arthritis, arthrosis, neuralgia, pain syndrome, inflammation and swelling of joints and muscles, consequences of injuries.

Active components: peptide complexes: vascular wall (AA-7), cartilage (AA-9), extracts: cinquefoil, boswellia, cayenne pepper; camphor, menthol, essential oils of juniper and rosemary.

Application recommendations: apply to clean skin of problem areas 2-3 times a day with light circular motions until fully absorbed.

50 ml

Comprehensive prevention



Amvix®

source of readily available energy

The composition of fast-dissolving tablets includes vitamins and amino acids necessary for the normal functioning of the nervous system and the restoration of metabolic activity. The components of the preparation normalize blood pressure and blood sugar levels, combat fatigue, enhance mental and physical activity, and have an antitoxic effect.

Recommended for increased physical and mental stress, stressful situations, during recovery after illnesses, during business trips and travels, especially those involving time zone changes, and during diets.

Active components: Eleutherococcus root extract, taurine, beta-alanine, glutamic acid, carnitine, aspartic acid, arginine, leucine, isoleucine, valine, vitamins: A, C, E, B₆, B₉, PP.

Usage recommendations: take one tablet in the first half of the day, dissolving it in a glass of room temperature water beforehand.

10 fast-dissolving tablets of 2.5 g each



Previn®

capillary protection

A preparation based on hesperidin, nicotinamide, and plant components. It has angioprotective and antioxidant effects. It relieves spasm of small arterioles, improves microcirculation, helps strengthen capillary walls, restores the rheological properties of blood, and prevents thrombosis and the development of stroke and heart attack.

Recommended as an additional source of hesperidin and nicotinamide, for relieving spasm of small vessels, normalizing the rheological properties of blood, preventing the development of atherosclerosis, stroke, and heart attack, reducing blood cholesterol levels, strengthening vessel walls, and restoring capillary blood flow.

Active components: L-arginine, hesperidin, choline bitartrate, green tea extract, vitamin PP.

Usage recommendations: 1 tablet per day during meals. Duration of intake is 4-6 weeks. If necessary, the intake can be repeated. Repeat courses are possible throughout the year.

30 tablets of 0.5 g each



Felicita®

natural antidepressant

A comprehensive natural bioregulator that positively affects the cardiovascular and nervous systems of the body. Its action is due to the B vitamins, folic acid, and calcium pantothenate included in its composition, which play an important role in maintaining the normal functioning of the nervous system. The effect of the product on mental activity involves relieving severe psycho-emotional tension caused by frequent stressful situations.

Recommended for severe psycho-emotional tension, neuroses, apathy, depression, and chronic fatigue, as well as increased physical and mental stress.

Active components: Magnesium carbonate, vitamins: C, B₁, B₆, B₁₂, PP, calcium pantothenate, folic acid, biotin; clove, basil, lecithin, cinnamon, tyrosine, arginine, phenylalanine, 5-hydroxytryptophan.

Usage recommendations: 1 tablet per day during meals. Duration of intake is 4-6 weeks. If necessary, the intake can be repeated. Repeat courses are possible throughout the year (in autumn and spring).

30 tablets of 0.71 g each



Temero Genero®

support for the neuroendocrine system

A complex of two products to improve the functioning of the neuroendocrine and immune systems.

Temero is a modulator of the pineal gland and brain function, positively affecting metabolism. Designed for morning intake — the time of physiological activity of the pineal gland.

Genero is a modulator of the immune system and regenerative processes. Designed for evening intake.

Recommended for strengthening the immune system, in neuroendocrine disorders, in the comprehensive correction of neuroses and depression, to enhance vitality and regeneration processes, in sleep disorders, in the comprehensive correction of climacteric disorders. Used in programs for the treatment of alcohol and drug dependencies, to achieve active longevity.

Active components of Temero: Glycine, glutamic acid, choline bitartrate, aspartic acid, calcium citrate, magnesium citrate, alanine, zinc citrate, 5-hydroxytryptophan, folic acid.

Active components of Genero: Calcium citrate, magnesium citrate, glutamic acid, aspartic acid, proline, choline bitartrate, zinc citrate, lysine, folic acid.

Usage recommendations: 1 Temero tablet in the morning during meals and 1 Genero tablet in the evening. Duration of intake is 4-6 weeks. Repeat courses are possible throughout the year.

Temero: 30 tablets of 0.55 g; Genero: 30 tablets of 0.65 g

Comprehensive prevention



Alvenorm Forte®



support for the bronchopulmonary system

A comprehensive peptide bioregulator for normalizing the respiratory system's function. The combination of ultra-short peptides and a complex of plant extracts ensures effectiveness in the prevention and correction of bronchopulmonary tree diseases.

Does not cause irritation of mucous membranes, has mucolytic, anti-septic, antispasmodic, and immune-activating effects.

Recommended for acute respiratory viral infections and acute respiratory diseases, acute and chronic bronchitis, chronic obstructive pulmonary disease. Indicated for pneumonia and bronchial asthma as part of complex therapy.

Active components: peptide complexes: peptide of the immune system B-link (AA-3), bronchial peptide (AA-14), lung and stomach wall peptide (AA-15), decoction of cetraria, red grape juice concentrate, extracts: plantain, calendula flowers, nettle, lingonberry leaf, licorice root, thyme, eucalyptus.



Digemax®

gastrointestinal tract support

Normalizes the function of the gastrointestinal tract, provides a protective coating on the stomach lining, creating a barrier against aggressive components and pathogenic flora.

Stimulates the growth and activity of beneficial intestinal microflora, improves its peristalsis, and has antispasmodic, anti-inflammatory, hepatoprotective, and mild choleric effects.

Recommended for gastric and duodenal ulcers, acute and chronic gastritis, colitis, diarrhea, enteritis, heartburn, and increased gas formation, bile stasis, decreased appetite.

Active components: concentrated apple and chokeberry juices, lactulose, natural plant extracts: chamomile, aloë vera, mint, yarrow, licorice, St. John's wort, calendula, marshmallow, fennel.



Canacor® capillary protection

A comprehensive medication that supports heart function and vascular condition at an optimal physiological level. It activates tissue respiration processes in myocardial cells and increases their resistance to hypoxia.

It helps normalize the rheological properties of blood, increases the elasticity of arteries and capillaries, and reduces the load on the myocardium. It relieves excessive tension and spasms of smooth muscle cells in the arteries.

Recommended for atherosclerosis and coronary heart disease, increased blood clotting, pathological fragility of blood vessels, arterial hypertension, myocarditis of various origins, myocardial dystrophy. Indicated for the prevention of heart attack and stroke.

Active components: apple juice concentrate, taurine, vitamin PP, arginine, natural plant extracts: hawthorn, white willow bark, nettle; DHQ (dihydroquercetin).



Retisil® reliable vision support

Supports the function of the visual organs at an optimal physiological level, contributes to a noticeable improvement in blood supply to the retina, relieves eye fatigue, and improves vision, especially at dusk and in the dark. Provides protective action on the retina under increased visual loads and prolonged work with digital devices. Helps slow down age-related changes in eye tissues and maintain visual acuity.

Recommended for normalizing metabolism in eye tissues, in diabetic and atherosclerotic angiopathy, retinal degeneration. Indicated for increased visual loads, for the prevention of age-related changes in visual organs.

Active components: concentrated cranberry and blueberry juices, natural plant extracts: rosehip, grape seed, nettle, schisandra, green tea, licorice; zinc lactate.



Usage recommendations: take 1 teaspoon (5 ml) twice a day on its own or as an addition to other drinks. Duration of intake is 1 month. Repeat courses are possible 3-4 times a year.



Cleantestin®

Cleansing and protection from parasites

The formula of the antiparasitic preventive bioproduct "Cleantestin" represents an innovative scientific achievement based on natural plant components and vitamin C. The unique formula synergistically activates the functional work of three key body systems: the gastrointestinal tract, kidneys, and respiratory system, responsible for the elimination of biological toxins.

It helps restore the balance of intestinal microflora and intensifies detoxification. It also supports the body in resisting viral and parasitic infections, creating an effective barrier against external agents. It demonstrates outstanding properties in the prevention of joint diseases, atherosclerosis, autoimmune and allergic pathologies, including oncological diseases.

Active components: concentrates of apple and black currant juices, natural plant extracts: stevia leaves, tansy flowers, fennel seeds, buckthorn bark, aspen bark, calamus roots, goldenrod, tarragon, elecampane roots, centaury, black walnut leaves, cloves, and ginger, vitamin C.

Recommendations for use: It is recommended for adults and children over 14 years old to take 1 teaspoon (5 ml) 2 times a day during meals. The duration of intake is 2-3 weeks. If necessary, the course can be repeated up to 3-4 times a year.



coming soon



Pinaxel®

Peptide Bioregulator for Eyes

Stimulates tissue repair in diseases and injuries of the retina and cornea. Complexes of **immune system peptides**, **vascular wall peptides**, **retinal peptides**, and **I** enhance cellular metabolism and activate regeneration processes. Placental peptides possess strong regenerative potential, promote cell renewal, and accelerate reparative processes in ocular tissues. Panthenol promotes healing and reduces inflammation, while hyaluronic acid deeply moisturizes the cornea and accelerates its recovery. **N-acetylcysteine (NAC)** strengthens antioxidant protection, shielding the lens and retina from oxidative stress, supports metabolic activity in the cornea, and increases tissue resistance to hypoxia. Succinic acid boosts the energy potential of cells and stimulates the formation of new ones.

Used for visual fatigue, dry eye syndrome, glaucoma, angiopathies, macular dystrophy, and during the postoperative period, helping to improve visual function and vascular condition.

Active ingredients: n-acetylcysteine (NAC), peptide complexes: peptide complex PP-3 (peptide of the immune system B-link), peptide complex PP-6 (retinal peptide), peptide complex PP-22 (placental peptide), panthenol, hyaluronic acid, succinic acid.

Directions for use: apply 3–6 drops 1–3 times daily to the skin around the eyes. Occasional penetration of the balm into the subconjunctival space is accounted for by the specific production technology of the product and enhances its restorative effect.



Weight and figure correction program



Reviform® cocktail

figure and weight correction


The "Reviform® cocktail" is distinguished by an optimal balance of easily digestible proteins, vitamins, and minerals included in the drink. It provides the body with the necessary energy, has rejuvenating and antioxidant effects.

High fiber and enzyme content helps safely reduce weight and has a strengthening effect on the body. Bowel movements are normalized, the gastrointestinal tract mucosa is restored, and gland secretion and stomach acid levels are normalized.

Recommended for weight correction, improving the excretory system's function, stimulating metabolic processes, preventing obesity and cardiovascular diseases.

Active components: isolated soy protein, dry skimmed milk, coconut powder, whey protein concentrate, chicory inulin, soluble dietary fibers (gum arabic), vitamins: C, B₁, B₆, B₁₂, PP, folic acid, calcium pantothenate, biotin; iron, manganese, copper, iodine, selenium, zinc.

Usage recommendations: Pour 2 tablespoons (25 g) into a glass, add a little boiled water or milk at room temperature, stir until smooth, and bring the volume to 200-250 ml. Prepare immediately before consumption.

 dry mix 375 g



Volustom®

natural metabolism regulator

Human microflora needs water-soluble fiber, which is found in flax and plantain seeds, chicory, and apple pectin. These components are part of "Volustom" and create an ideal environment for the growth of beneficial microflora. Additionally enriched with spices (turmeric, ginger, cinnamon) that activate digestion and toxin elimination.

Promotes normalization of metabolism, improves gastrointestinal function, stimulates intestinal peristalsis, and aids in weight reduction. Recommended for improving gastrointestinal tract function, in detoxification and functional nutrition programs.

Active components: whole apple powder, chicory inulin, bamboo fiber, oat fiber, apple fiber, chicory oligofructose, psyllium (plantain seed husk), flax seeds, cinnamon powder, apple pectin, turmeric, ginger powder, natural sweetener stevioside.

Usage recommendations: Dilute 1 teaspoon (5 g) of concentrate in 100-150 ml of water at room temperature and drink. Follow with an additional amount of water. Consuming fibers requires an increase in fluid intake. Dilute the complex immediately before consumption. Take 1-2 times a day.

 150 g



NEW

NEXT-GENERATION SYNBIOTIC



MICROBIOME BALANCE FOR ACTIVE LONGEVITY


Innovative synbiotic complex from the "Panbiom" series based on 5 strains of probiotic cultures with *Bacillus subtilis* metabolites and vitamins A, E, D₃, K₂. Provides comprehensive restoration of intestinal microflora, strengthens immunity, and improves digestion.

"ProbiSet" is a balanced synbiotic for effective restoration and maintenance of healthy intestinal microflora. The combination of bifidobacteria, lactobacilli, thermophilic streptococcus, and propionic acid bacteria with ready-made metabolites of *Bacillus subtilis* ensures immediate action and long-term results. The vitamin complex enhances the immunomodulatory effect and supports the integrity of mucous membranes.

Recommended for restoring the microbiome after antibiotic therapy, for dysbiosis, to support immunity, and improve digestion.

Active components: 5 strains of probiotic cultures from the "Panbiom" series: *Bifidobacterium adolescentis*, *Lactobacillus rhamnosus*, *Lactobacillus plantarum*, *Streptococcus thermophilus*, *Propionibacterium freudenreichii*. Metabolites of *Bacillus subtilis*. Vitamins A, E, D₃, K₂.

Usage recommendations: adults take 2 capsules per day during meals. Duration of intake is 1 month. If necessary, the course can be repeated.

 60 capsules of 310 mg each

Antioxidant natural rejuvenating agents

Aging begins where protection ends. Every day, brain cells, vessels, and nerve tissue are attacked by free radicals, accumulate micro-damages, and gradually lose the ability to recover. This process is imperceptible—until it becomes obvious.

The series of mesotels for internal use was created as a response to this challenge. It is based on natural plant extracts with proven neuroprotective and antioxidant activity, enhanced by physiologically active substances that act specifically: protecting neurons, supporting the vascular wall, normalizing metabolic processes, and slowing down cellular aging.

The line is structured by increasing complexity—from the classic formula based on gotu kola and goji to the innovative Mesotel® Ultra complex (see page 27-A) with targeted peptide bioregulators of the brain and vessels. Each subsequent generation does not cancel the previous one but deepens the impact, adding new protection mechanisms: selenium and zinc for the immune system, resveratrol for counteracting cellular aging, glycine, and vitamin B₆ for neurotransmitter balance.

Everything included in the composition of mesotels is selected in precise proportions for synergistic interaction. The components not only complement each other—they enhance each other's effects, forming a stable system of protection for the body from within.



Mesotel Beauty

with zinc and vitamins

Recommended for improving cerebral circulation, functioning of the central nervous system, rehabilitation after a stroke, prevention of oncopathology, antioxidant protection of the body, boosting immunity, and for aging prevention.

The enriched formula with zinc lactate and sodium selenite provides additional antioxidant protection and immune system support. Zinc accumulates in brain structures, regulates receptor activity, and participates in neurotransmission, while selenium enhances antioxidant protection of cells from free radical damage.

Recommendations for the use of oral mesotels: 1 teaspoon 1-2 times a day during meals. Duration of intake is 1 month. If necessary, the course can be repeated.

Active components: extracts of gotu kola and goji berry, zinc lactate, sodium selenite.





Mesotel Neo

with resveratrol


Recommended for improving cerebral circulation, preventing atherosclerosis, normalizing lipid metabolism, enhancing neuromuscular conductivity and functioning of the central nervous system, preventing oncopathology, rehabilitation after heart attack and stroke, boosting immunity, antioxidant protection of the body, and aging prevention.

Resveratrol protects cells from oxidative stress, slows down aging processes at the cellular level, and contributes to the improvement of the cardiovascular system. In combination with choline bitartrate, zinc, and selenium, it provides comprehensive protection of the body and optimization of metabolic processes.

Recommendations for the use of oral mesotels: 1 teaspoon 1-2 times a day during meals. Duration of intake is 1 month. If necessary, the course can be repeated.

Active components:

choline bitartrate, extracts of gotu kola and goji berry, zinc lactate, sodium selenite, resveratrol.

 120 ml

Mesotel Tabs

with resveratrol, glycine, vitamin B₆


Recommended for antioxidant and anti-stress protection of the body, improving cerebral circulation, enhancing the functioning of the central nervous system, increasing mental performance, restoring memory and concentration, improving metabolic processes in the body, and slowing down aging processes at the cellular level.

Glycine regulates nerve activity and reduces neuron excitability, supports cognitive functions, and stabilizes emotional state. Vitamin B₆ is involved in the synthesis of neurotransmitters and supports the brain's energy metabolism. The tablet form ensures convenient use and prolonged systemic action.

Recommendations for the use of tablet mesotel: take 1 tablet once a day during meals in the first half of the day. Duration of intake is 4-6 weeks. If necessary, the course can be repeated.

Active components:

glycine, choline bitartrate, green tea extract, resveratrol, pyridoxine hydrochloride.

 30 tablets of 0.6 g

Progressive technologies in the fight against the disease of the 21st century

The company's assortment includes a specialized "Oncoseries" — a line of preparations for the prevention of oncological diseases and support of patients in conjunction with main therapy.*

The lineup includes several specialized products:

"Ensil" — a basic oncoprotector for prevention in the presence of underlying conditions predisposing to the development of oncopathology.

"Revifort" — a broad-spectrum oncoprotector. Used both for underlying conditions and already diagnosed oncopathology to enhance the effectiveness of primary treatment methods and improve long-term therapy outcomes.

"Reviplant" — a comprehensive chemo- and radioprotector. Supports the functions of major organs and systems during chemotherapy and radiation therapy, with auxiliary antitumor effects.

"Levain" — an immunomodulator that enhances the action of antitumor drugs that destroy the structure of cancer cells, significantly improving treatment outcomes.

"Likam" — a detoxification agent to prevent and reduce the side effects of chemotherapy.

*The lineup also includes a specialized series "Mamiton" for the prevention of mastopathy and neoplasms in women. See page 55-A.



Ensil® basic oncoprotector


The oncoprotective complex improves tissue respiration and regeneration parameters. Its effectiveness is ensured by the synergy of its components.

Recommended for immunodeficiency states of various origins, for the prevention of oncological diseases, during rehabilitation after severe injuries and illnesses, in the recovery period after heart attacks and strokes, and in the pre- and postoperative periods.

Indicated for degenerative diseases of the joints and spine, chronic diseases of the respiratory organs, gastrointestinal tract and urinary tract diseases, hypovitaminosis, metabolic disorders, and redox processes. Used for increased physical exertion and to prevent premature aging.

Active components: L-carnitine, L-cysteine, succinic acid, echinacea extract, vitamins: A, B₁, B₂, B₅, B₆, B₁₂, C, D₃, E, PP, folic acid, biotin, coenzyme Q10.

Usage recommendations: 1 capsule 3 times a day with meals. Duration of intake is 1 month.

 90 capsules of 0.31 g




Revifort® broad-spectrum oncoprotector

Combines the achievements of Eastern and classical medicine. Includes shiitake, reishi, maitake, and cordyceps — natural sources of glucans that activate the immune system for multiphase destruction of tumor cells directly at the tumor site.

Recommended for the prevention of oncopathology, as part of the comprehensive treatment of cancer patients with various localizations and stages of the process. Indicated for immunodeficiency states, systemic lupus erythematosus, scleroderma, rheumatism, combined cardiovascular pathology, multiple sclerosis, chronic hepatitis, diabetes mellitus, and metabolic disorders. Used to prevent premature aging.

Active components: mushroom extracts: shiitake, reishi, maitake, cordyceps; purple echinacea extract; zinc citrate, kelp thallus extract, sodium selenite.

Usage recommendations: adults take 1 capsule 2 times a day with meals. Duration of intake is 1 month. Break between courses should be at least 10 days.

 60 capsules of 0.31 g



Reviplant®

next-generation chemo- and radioprotector

Designed to reduce the damaging effects of toxic antitumor therapy (chemotherapy, radiation therapy) on healthy organs and tissues. The drug allows for a full course of therapy without interruptions caused by treatment side effects. It includes an improved complex of amino acids and plant extracts.

Recommended for the prevention and compensation of secondary immunodeficiency conditions caused by radiation and chemical factors, enhancing the body's resistance to intoxication, infections, and radiation, correcting metabolic processes, reducing pain syndrome, increasing treatment effectiveness, and improving the well-being of cancer patients.

Active components: valine, arginine, taurine, leucine, isoleucine; extracts: artichoke, rosehip, burdock, maral root, chaga.

Usage recommendations: 1 teaspoon 2 times a day. Duration of intake is 20 days.



200 ml



Levain®

immunomodulator with antistress action

Used in autoimmune diseases to improve the functioning of the circulatory and central nervous systems. In cancer diseases, as part of complex therapy, it reduces the risk of metastasis in lymph nodes and limits tumor growth.

Recommended for cancer diseases as part of complex therapy, for reduced immunity, to improve circulation and lipid metabolism, increase tone, and improve well-being.

Active components: extracts: maral root, amaranth, eleutherococcus, willow herb (fireweed), rhodiola rosea, plantain, St. John's wort, licorice, schisandra.

Usage recommendations: 1 tablet once a day with meals. Duration of intake is 1 month. Repeat courses are possible 3-4 times a year.

 30 tablets of 0.3 g



Likam®

comprehensive body detoxification

An effective gero- and oncoprotector with a general strengthening effect on the body. In cancer diseases, it prevents and reduces the negative consequences of chemotherapy and toxic substances included in antitumor drugs.

Recommended as part of complex therapy for cancer diseases, for pain syndrome, to strengthen the vascular wall. Indicated for chronic intoxication of various etiologies, toxic vascular lesions, alcohol and chronic drug intoxications, prolonged antibiotic therapy.

Active components: natural conifer complex, lycopene, astragalus extract, resveratrol, amino acids: arginine, glycine, glutamic acid, aspartic acid, alanine, 5-hydroxytryptophan (5-HTP).

Usage recommendations: 1 tablet once a day with meals. Duration of intake is 1 month. Repeat courses are possible 3-4 times a year.

 30 tablets of 0.5 g

Phytocomplexes «Ayurveda»

Phytocomplexes "Ayurveda" – nature's wisdom for health and longevity

The "Ayurveda" line of tea beverages is created based on ancient Ayurvedic principles of body harmonization and modern knowledge of phytotherapy. Each formula is carefully balanced to restore the natural balance of internal systems, slow down aging processes, and maintain vital energy.

The phytocomplexes include classic Ayurvedic herbs and spices, complemented by plants from traditional phytotherapy of similar climatic regions. This enhances the effectiveness of the formulas and adapts them to the characteristics of the European human body.

Alongside vitamins and minerals, the phytocomplexes contain amino acids, essential oils, tannins, and other biologically active compounds. The unique composition of the base teas promotes natural detoxification, strengthens the body's defenses, restores gastrointestinal functions, and normalizes digestion.

Create your own flavor palette from the "Ayurveda" tea series and discover their natural strength and harmony.

Usage recommendations: 1 filter bag
2 times a day, brew with hot water
(200-250 ml), steep for 5-7 minutes.
Duration of intake is one month.
Repeat courses are possible 3-4
times a year.

25 filter bags






vedomix

Чайный напиток «Комплекс Ведомикс»
Энергетический баланс
и естественное очищение



натуральный
состав



саше из фольги



авторский
рецепт

чайные пакетики в саше

 25 штук

**Аюрведический
фитокомплекс**

Ayurvedic
phyto complex

**Аюрведик
фито
комплекс**






Relanorm

Calmness and Clarity

A tea drink promoting inner balance and harmony. Helps maintain calmness during periods of increased stress, promotes relaxation and concentration. Creates a sense of comfort and confidence, helping to maintain clarity of thought even in stressful situations. Active components help normalize inhibitory and excitatory processes in the nervous system, improve sleep quality without daytime drowsiness. Supports cognitive functions and the ability to concentrate during mental exertion. Recommended for increased nervous excitability, emotional tension, sleep disturbances, concentration difficulties, and during periods of intensive mental work.

Active components: green tea, large plantain, calendula, nettle, hawthorn, peppermint, rosehip, lingonberry, birch leaves, field horsetail, lemon peel, clove, basil, cinnamon, motherwort.

Usage recommendations: 1 sachet 2 times a day, brew with hot water (200-250 ml), steep for 5-7 minutes. Duration of intake is one month. Repeat courses are possible 3-4 times a year.

 25 filter sachets in a box

Vedomix


Inner Balance

A basic phytocomplex for maintaining inner balance and harmony. Helps restore inner comfort, maintaining vigor and well-being throughout the day. Supports energy balance and a natural sense of well-being. The drink's components exhibit adaptogenic properties, helping the body cope more effectively with physical and emotional stress. Promotes improved metabolic processes, supports cardiovascular system function, and helps normalize digestion.

Recommended for maintaining overall tone, with rapid fatigue, reduced performance, during recovery after stress, and when adapting to new conditions.

Active ingredients: green tea, ginger, alder buckthorn, clove, cinnamon, cardamom, peppermint, licorice, St. John's wort, amla fruit.

Usage recommendations: 1 sachet 2 times a day, brew with hot water (200-250 ml), steep for 5-7 minutes. Duration of intake is one month. Repeat courses are possible 3-4 times a year.

 25 filter sachets in a box



Alvenorm


Free Breathing

A phytocomplex for strengthening vitality and maintaining overall tone. Promotes a feeling of free breathing and helps restore energy balance for an active life. Supports the body's natural defenses and creates a feeling of lightness. The herbs in the composition have soothing and calming properties for the respiratory tract, help liquefy and remove secretions. The antioxidant complex helps strengthen the local immunity of mucous membranes, and the anti-inflammatory components help reduce discomfort in the throat and nasopharynx.

Recommended for supporting the respiratory system, during seasonal ailments, reduced body defenses, need for energy support, discomfort in the upper respiratory tract.

Active ingredients: green tea, clove, calendula, marshmallow root, rosehip, linden flowers, dill, licorice, blueberry, yarrow, ginger, eucalyptus.

Usage recommendations: 1 sachet 2 times a day, brew with hot water (200-250 ml), steep for 5-7 minutes. Duration of intake is one month. Repeat courses are possible 3-4 times a year.

 25 filter sachets in a box

Ideal Form


Renewal and Harmony

A phytocomplex for lightness and renewal. Promotes a feeling of lightness, creates a comfortable well-being and harmonious form. Supports natural metabolic processes and helps maintain energy and activity throughout the day. The components of the drink stimulate metabolic processes and promote gentle body cleansing, aiding in the elimination of metabolic products. Improves digestion and supports normal intestinal peristalsis, helps control appetite and maintain a healthy fluid balance in the body.

Recommended for maintaining optimal weight, improving metabolic processes, when wishing to maintain lightness and comfort, in healthy lifestyle programs, with a comprehensive approach to body shaping.

Active ingredients: green tea, senna, hibiscus, nettle, calamus, yarrow, flax, peppermint, horsetail, turmeric, dandelion, birch leaves, dill, kelp.

Usage recommendations: 1 sachet 2 times a day, brew with hot water (200-250 ml), steep for 5-7 minutes. Duration of intake is one month. Repeat courses are possible 3-4 times a year.

 25 filter sachets in a box

hairline

peptides

Contain peptides



Shampoo Peptides

Healthy Shine for Your Hair

SHAMPOO PEPTIDES is designed for gentle cleansing and intensive restoration of all hair types. Its unique formula with peptides, proteins, collagen, and natural cocoa and avocado extracts nourishes the hair from root to tip. The key ingredient is a placenta peptide—rich in vitamins and minerals that strengthen the hair, enhance elasticity, and give it a healthy shine. Active ingredients restore each hair strand's structure, leaving it smooth, dense, and vibrant.

- Contains placenta and cartilage peptides.
- Suitable for all hair types.

Active ingredients: placenta peptide complex (PEPTIDE COMPLEX PP-22), cartilage peptide complex (PEPTIDE COMPLEX PP-4), protein, collagen, cocoa and avocado extracts.

Directions for use: Apply a small amount of shampoo to wet hair. Lather, then rinse thoroughly with warm water. Suitable for daily use. Avoid contact with eyes.



Hair Mask Peptides

Intensive Protection and Hair Restoration

HAIRMASK PEPTIDES acts as a protective barrier, preventing protein loss and keeping hair elastic, soft, and strong. The active ingredients help strengthen hair structure and shield it from environmental damage. Several peptide complexes in the mask provide deep nourishment and repair, leaving hair healthy, smooth, and radiant.

- Contains peptides from cartilage, thymus, placenta, and blood vessels.
- Suitable for all hair types.

Active ingredients: cartilage peptide complex (PEPTIDE COMPLEX PP-4), thymus peptide complex (PEPTIDE COMPLEX PP-6), placenta peptide complex (PEPTIDE COMPLEX PP-22), vascular peptide complex (PEPTIDE COMPLEX PP-3), collagen, jojoba seed oil, avocado and cocoa extracts.

Directions for use: Apply the mask to clean, towel-dried hair for 15–20 minutes. Rinse thoroughly. Use 2–3 times a week. Avoid contact with eyes.



Conditioner Peptides

For Moisture and Nourishment of Luxurious Hair



This conditioner's blend of active ingredients strengthens the hair structure and increases density. Peptides, proteins, collagen, and natural extracts of avocado, cocoa, and passion fruit seed oil give the hair a natural shine and soft volume. The gentle texture of CONDITIONER PEPTIDES spreads evenly and rinses off easily, making detangling effortless and preventing knots. It leaves hair more manageable and easier to style without weighing it down.

- Contains peptides from cartilage, thymus, and placenta.
- Suitable for all hair types.

Active ingredients: cartilage peptide complex (PEPTIDE COMPLEX PP-4), thymus peptide complex (PEPTIDE COMPLEX PP-6), placenta peptide complex (PEPTIDE COMPLEX PP-22), protein, collagen, cocoa and avocado extracts, passion fruit (maracuja) seed oil.

Directions for use: Apply to wet hair. Distribute evenly along the length. Gently comb through, then rinse thoroughly.



Mesotonic Peptides

Non-Invasive Hair Mesotherapy

This beauty product activates hair follicle function and gently cares for the scalp. Its formula is designed to stimulate hair growth and improve hair quality—without injections. MESOTONIC PEPTIDES contains peptides from thymus, vessels, and placenta, enhancing root nourishment, strengthening hair structure, and supporting healthy growth.

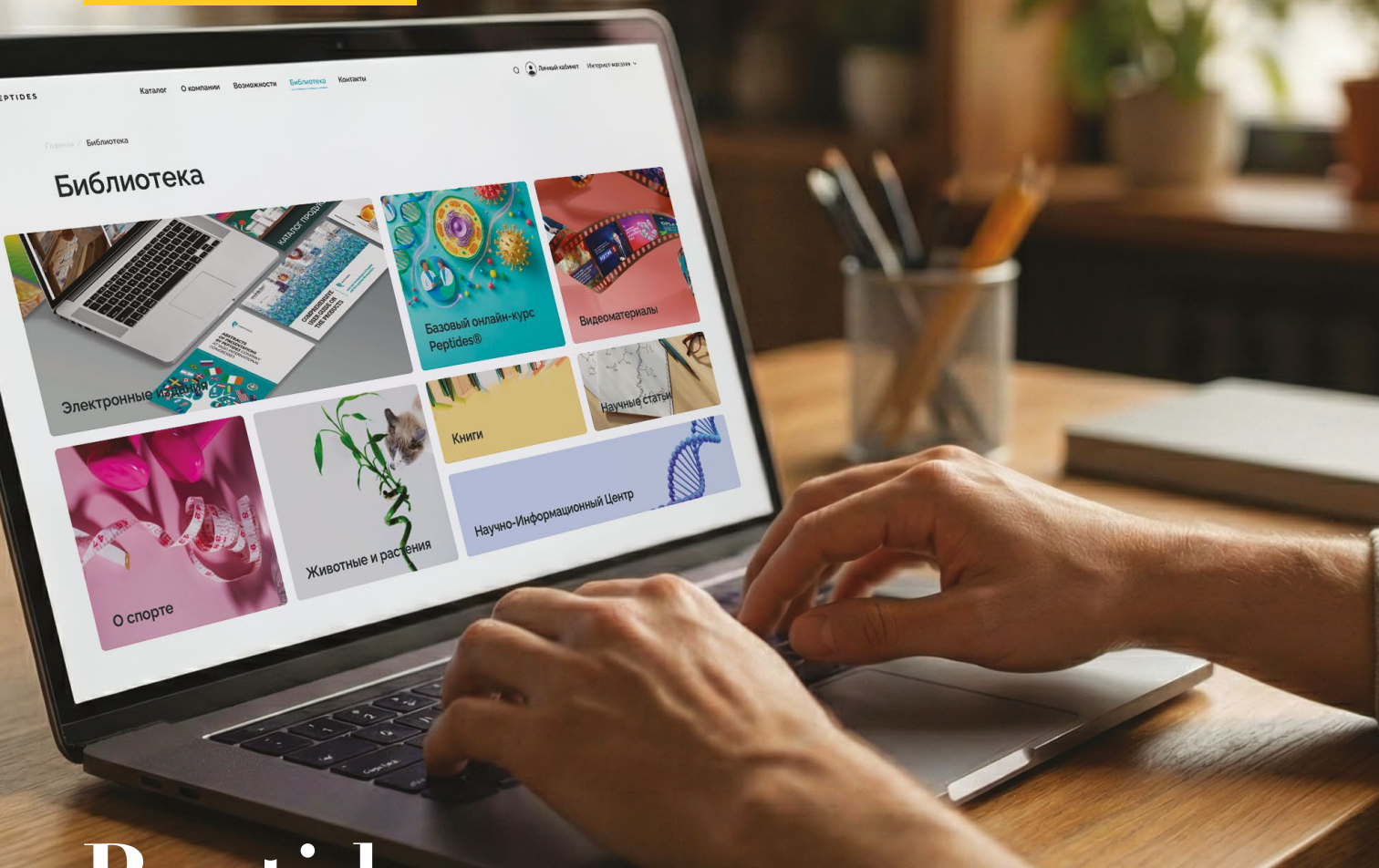
- Contains peptides from cartilage, thymus, and placenta.
- Suitable for all hair types.

⚠ Caution: Keep out of reach of children!

Active ingredients: cartilage peptide complex (PEPTIDE COMPLEX PP-4), thymus peptide complex (PEPTIDE COMPLEX PP-6), placenta peptide complex (PEPTIDE COMPLEX PP-22), castor oil, bergamot leaf oil.

Directions for use: Apply to towel-dried hair. Massage gently into the scalp. Leave on for 6–8 hours (preferably overnight). Rinse with warm water.





Peptides Library



ELECTRONIC EDITIONS

product catalogs, brochures, methodological guides, and publications in foreign languages for working with Peptides products.

SCIENTIFIC ARTICLES

verified data, clinical reviews, and current discoveries in the field of peptide bioregulation and aging theory. Publications by Russian and international scientists, research by Professor V.Kh. Khavinson.

BASIC EDUCATIONAL ONLINE COURSE

course for customers and partners. Video lessons on the company's activities, principles of product application, logic of a comprehensive approach, and analysis of all product lines. For beginners and experienced consultants.

SCIENTIFIC LITERATURE

fundamental monographs on aging theories, gerontology, and bioregulation. "Molecular and Physiological Mechanisms of Aging," works on epigenetic control, longevity genes, scientific trends in life extension.

SCIENTIFIC-INFORMATION CENTER (SIC)

a joint project of SPb IBiG and Peptides company. Publications by leading scientists, results of clinical studies, video lectures from the scientific staff, and expert materials on the use of peptides.

ANIMALS AND PLANTS

application of peptide bioregulators in veterinary and plant cultivation. Studies of effectiveness in dogs and cats, technologies for plant and seedling growth.



PREMIUM ORAL CARE

RENODONT®
Caries + Antiseptic
Caries prevention
and microbiome balance

RENODONT®
Periodontitis + Protection
Gum health
and microbiome protection



Healthy gums
and microbiome
balance
RENODONT®
Premium safe oral care

contains
peptide
and biotics
PP-2
PP-4
PP-6

cartilages • vascular • thymus

Cavity prevention
and microbiome
balance
RENODONT®
Premium safe oral care

contains
peptide
and biotics
PP-02
PP-04
PP-22

cartilages • vascular • placenta

Premium safe oral care
RENODONT®

Healthy gums
and microbiome
balance

contains
peptide
and biotics
PP-2
PP-4
PP-6
cartilages • vascular • thymus

PEPTIDES & BIOTICS
the perfect symbiosis for oral health



2026

